

雅砻水电站 ()

(2017-20

(2017—2019)

中国三峡出版传媒



CONTENTS

| | |
|-----|----|
| 01/ | 8 |
| 02/ | 10 |
| | 12 |
| | 30 |
| | 44 |
| | 46 |
| | 52 |
| 03/ | 56 |
| | 58 |
| | 60 |
| | 74 |
| | 84 |
| | 86 |
| | 88 |
| | 90 |
| | 92 |
| | 94 |
| | 96 |

CONTENTS

| | |
|-----|------------|
| | 98 |
| | 100 |
| | 101 |
| | 102 |
| | 103 |
| | 104 |
| | 105 |
| | 108 |
| | 109 |
| | 110 |
| | 111 |
| | 112 |
| | 113 |
| | 114 |
| | 115 |
| 04/ | 116 |
| 05/ | 2017- 2019 |
| | 128 |

01

序言

1600]1

2017 7 31

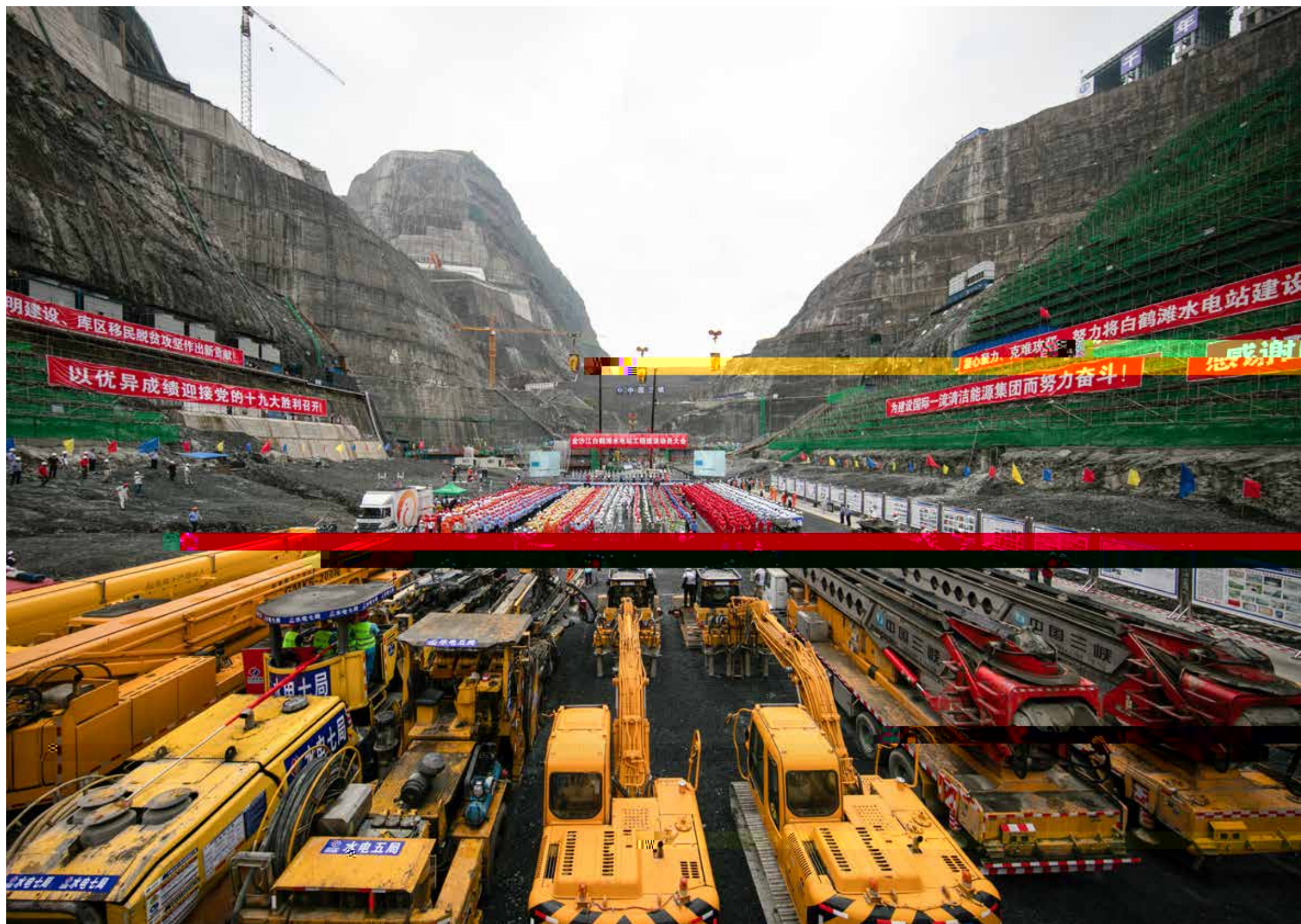
2021 7



02

工程进展

2017





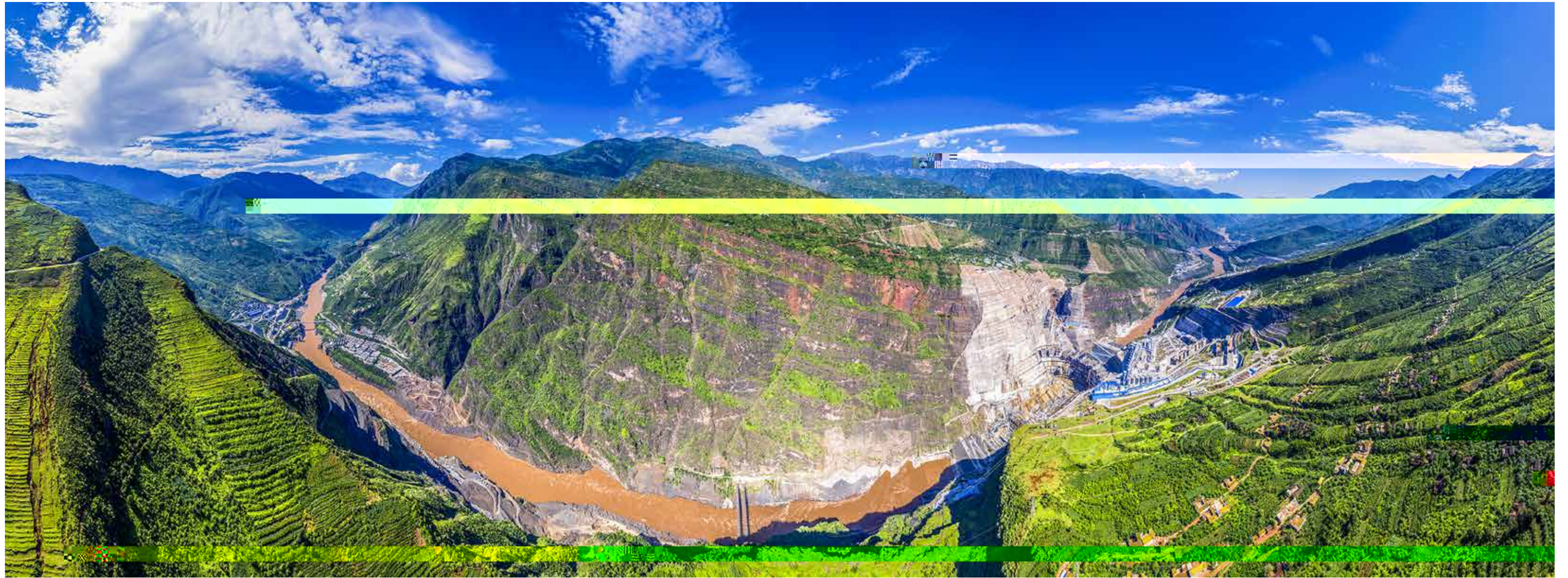
7 803 _³

 2017 4 12 565.1 _³ 757_

 200_ 2019 270.94 _³ 2019

 2020 3

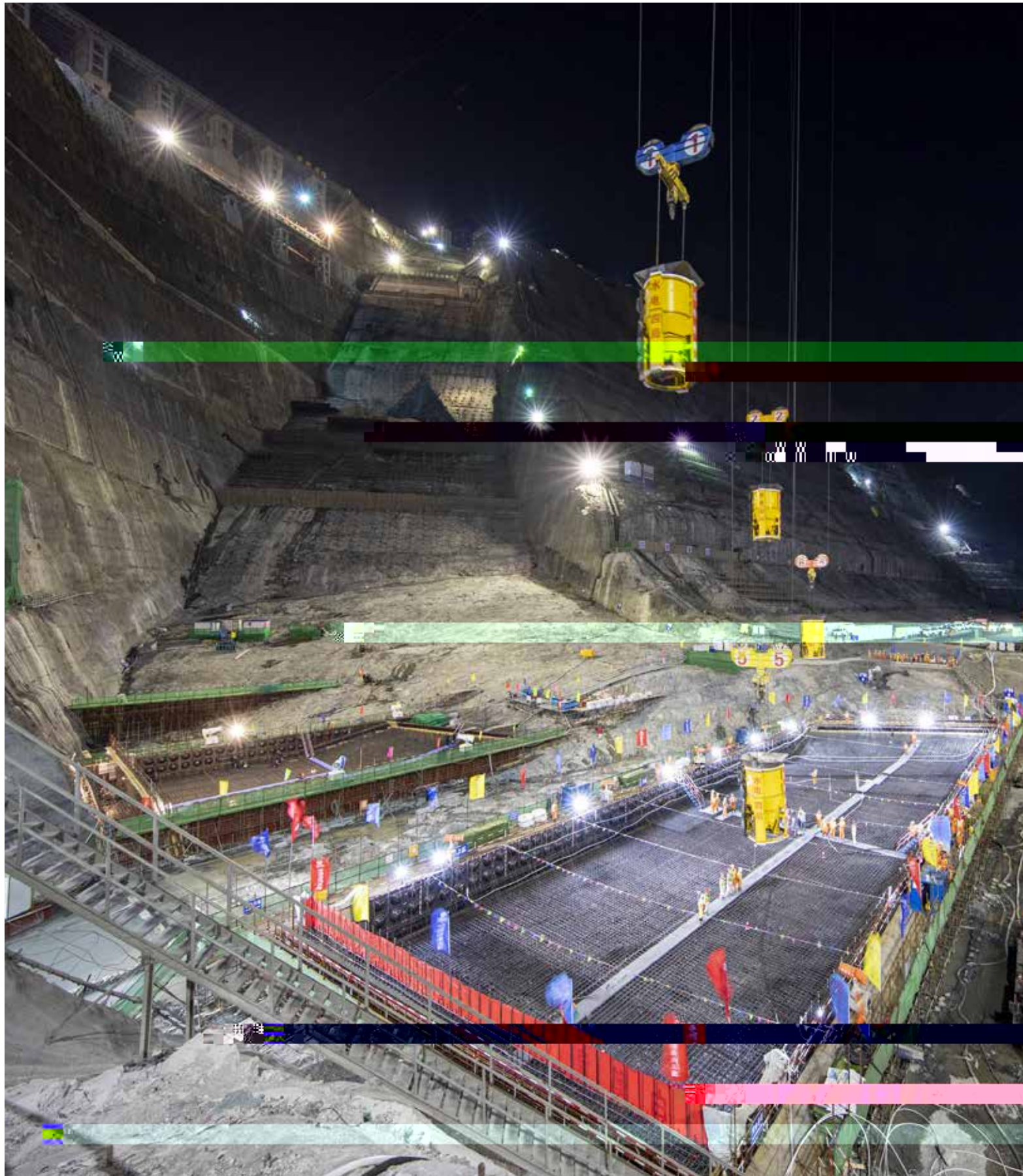
 834_ 289_ 6



■ ■ ■

. 2017 - 2019

■ ■ ■



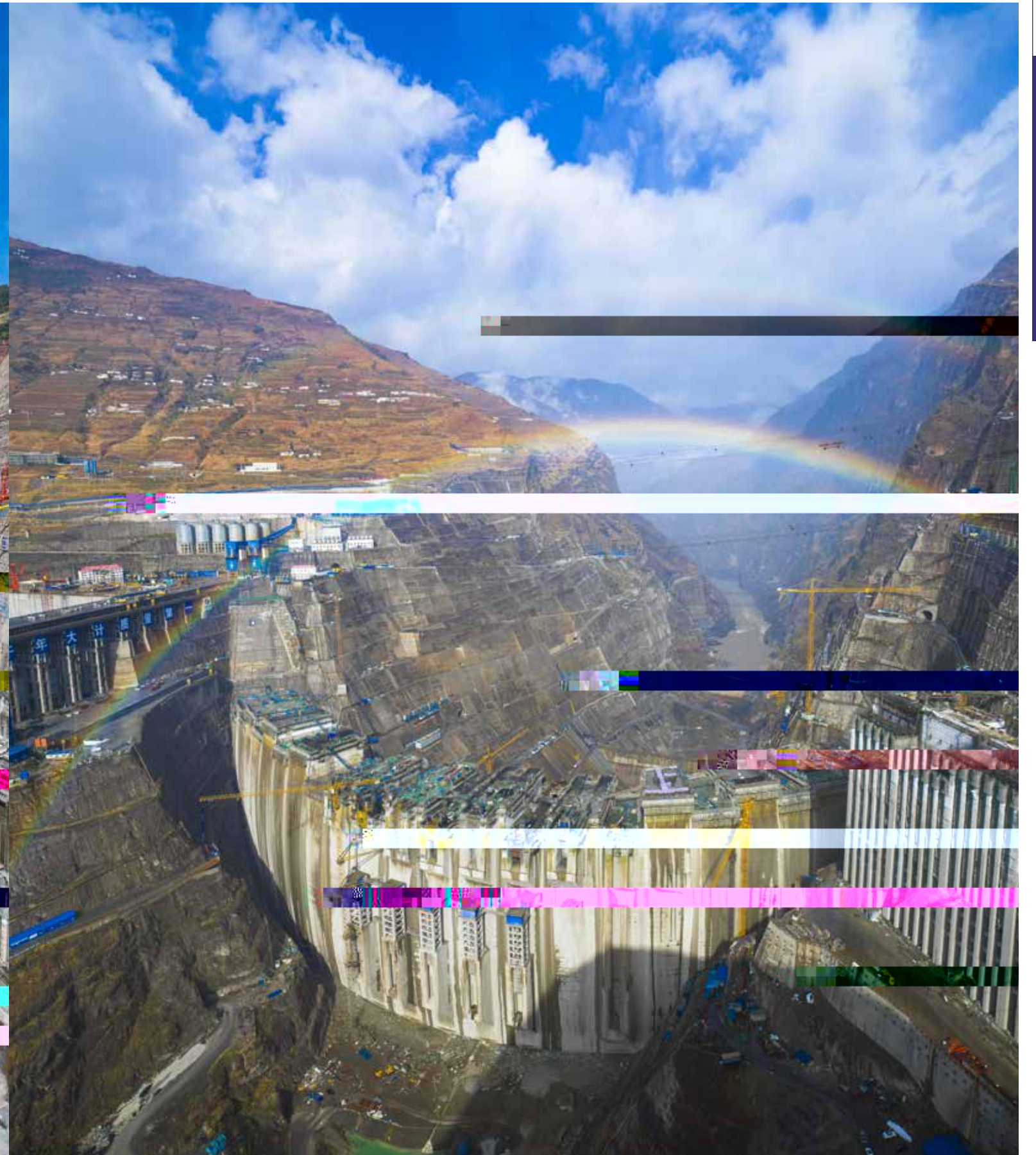
2017 4 12



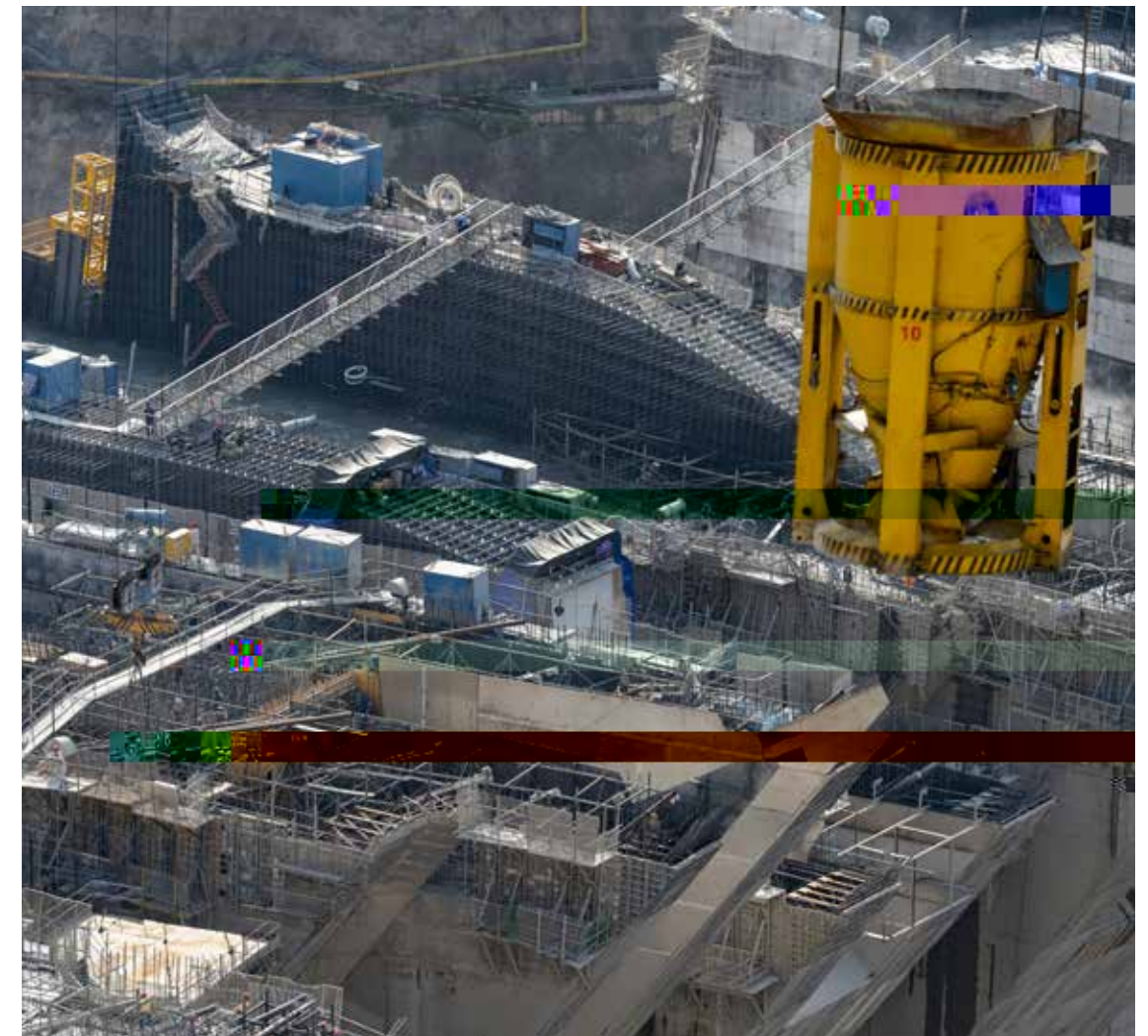
2017



2018



2019



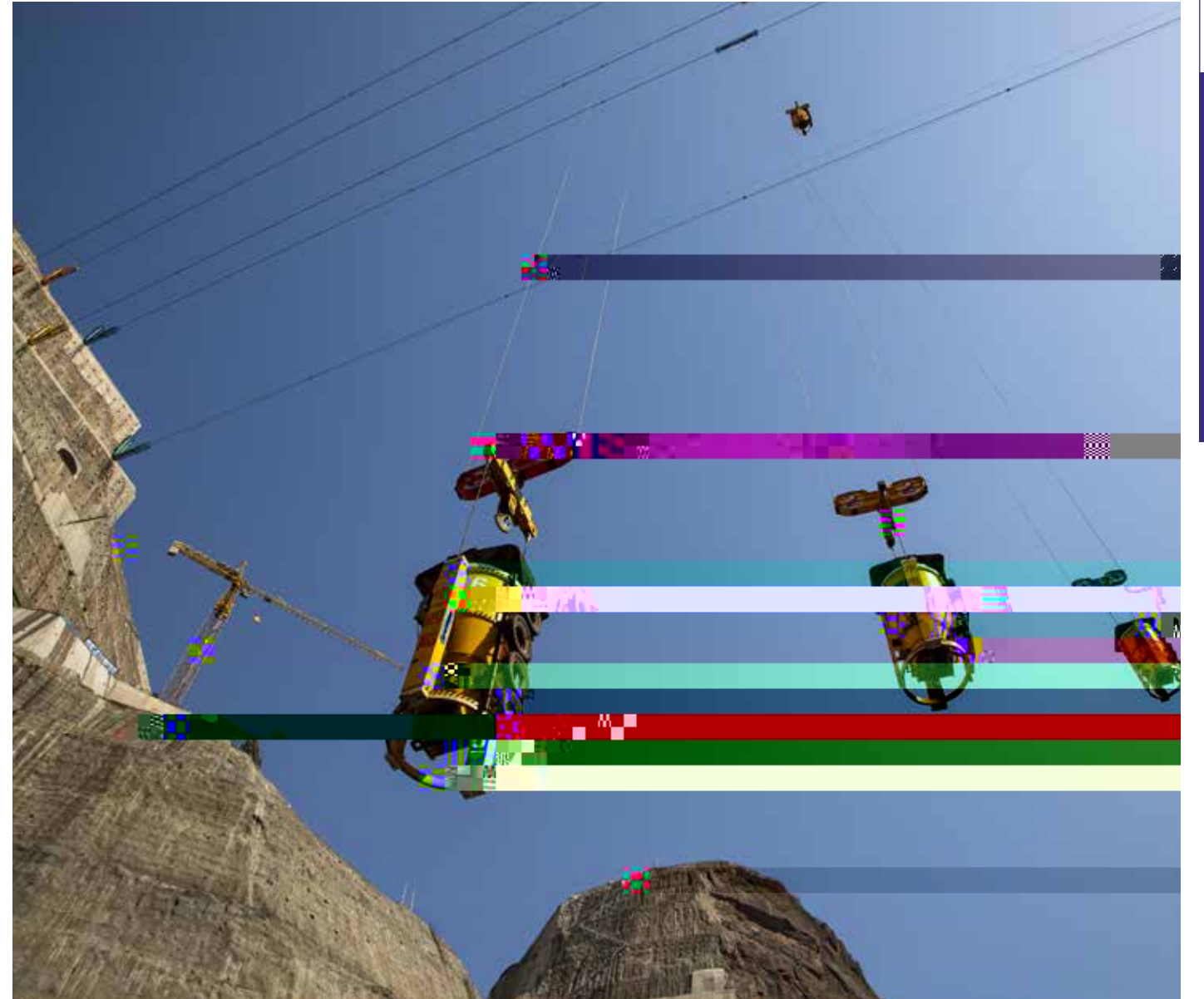


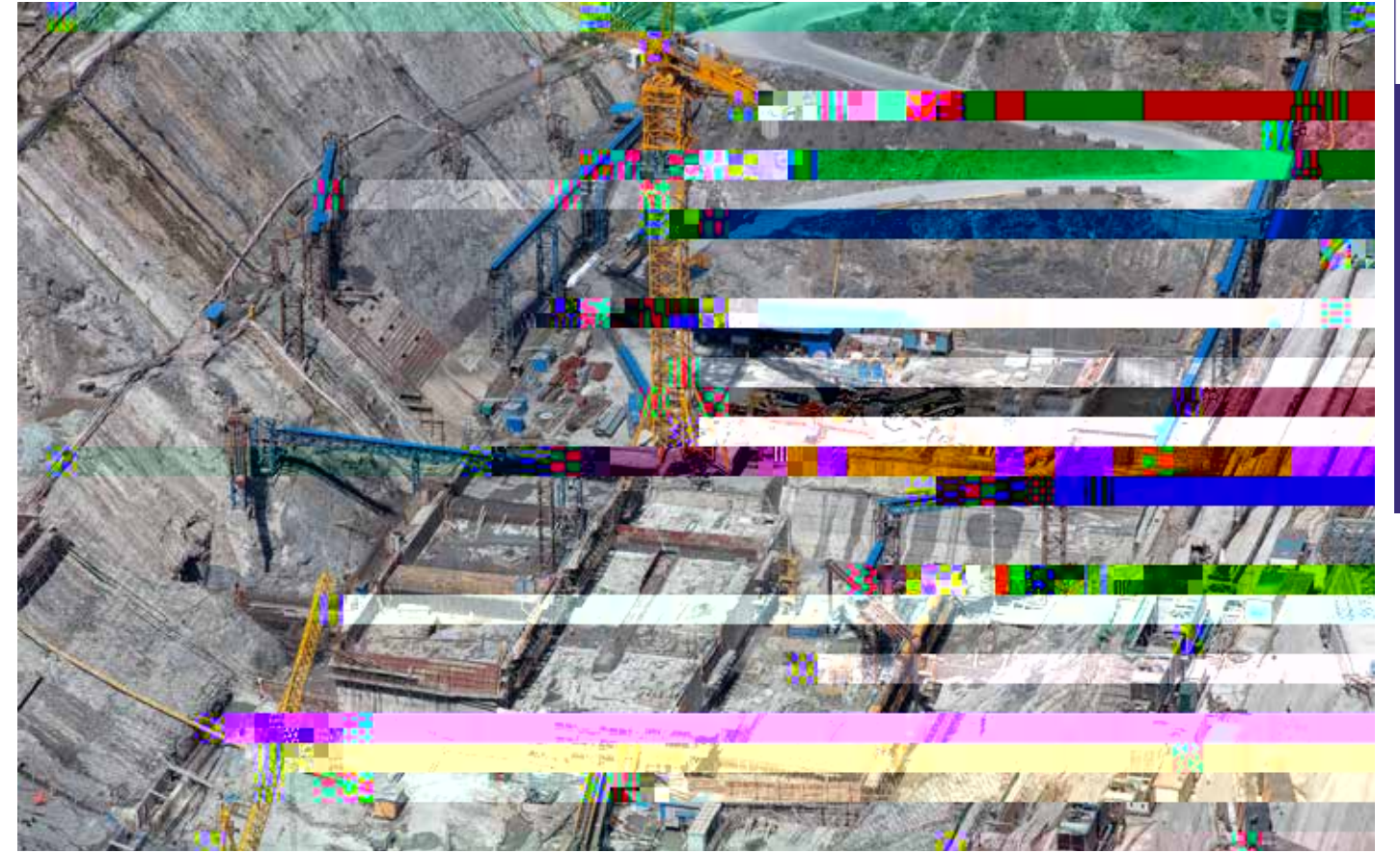
. 2017 - 2019





2017-2019





■ ■ ■
. 2017 - 2019
■ ■ ■



. 2017 - 2019





2014 6 1
2017 8 100]I
2018 1 8 9 14
18 2019



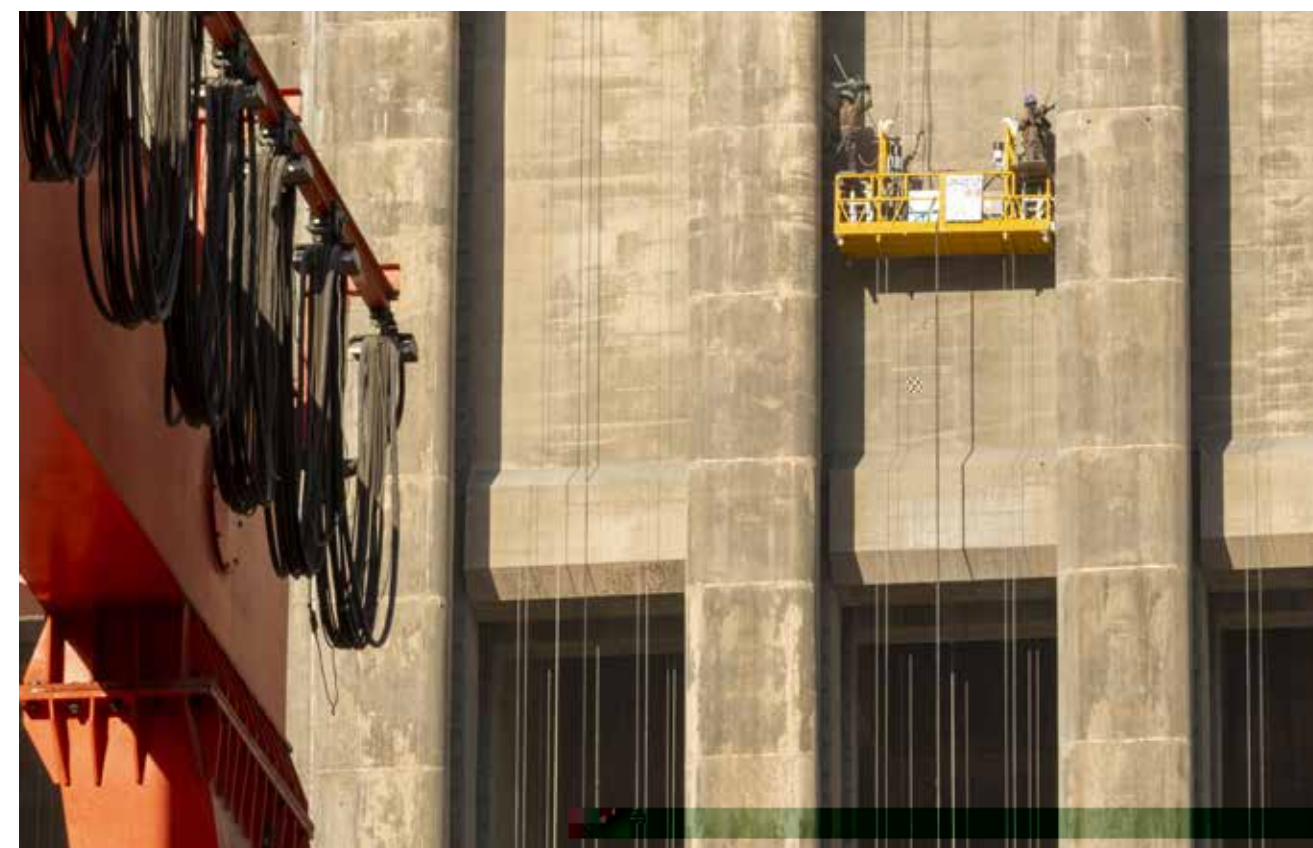
2017



2018

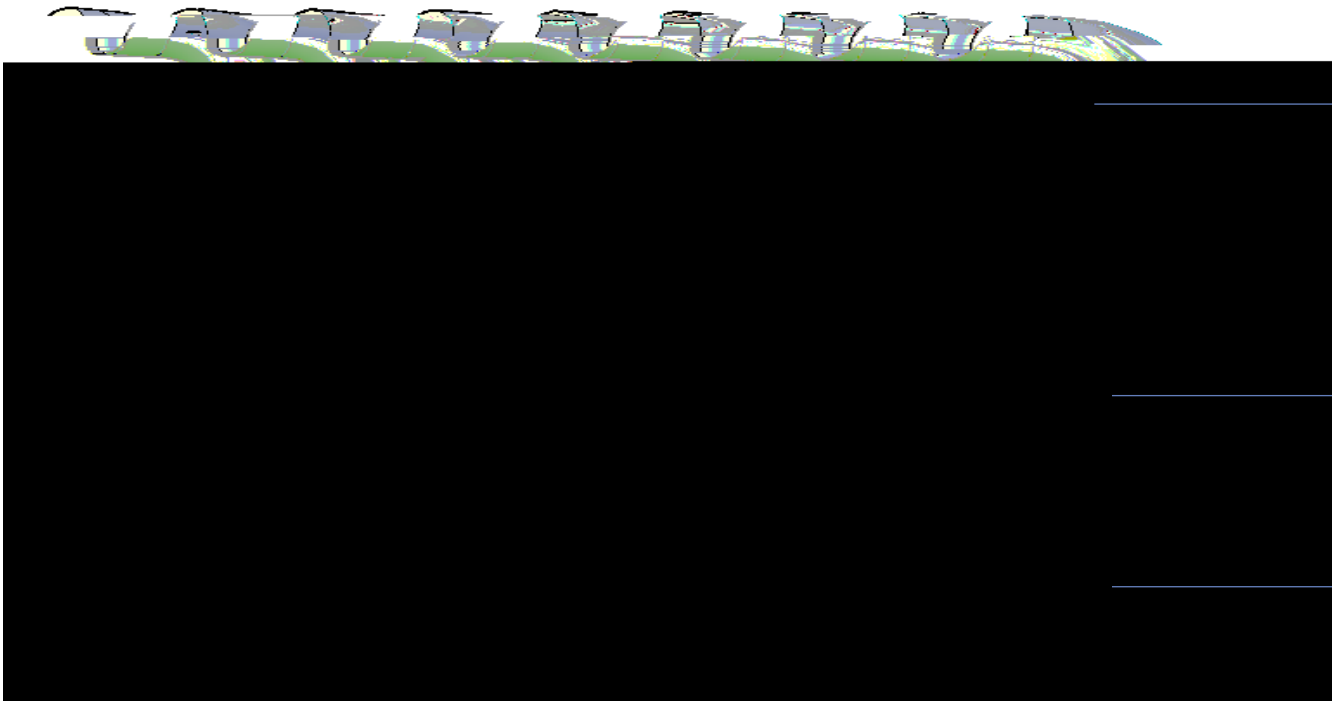


2019

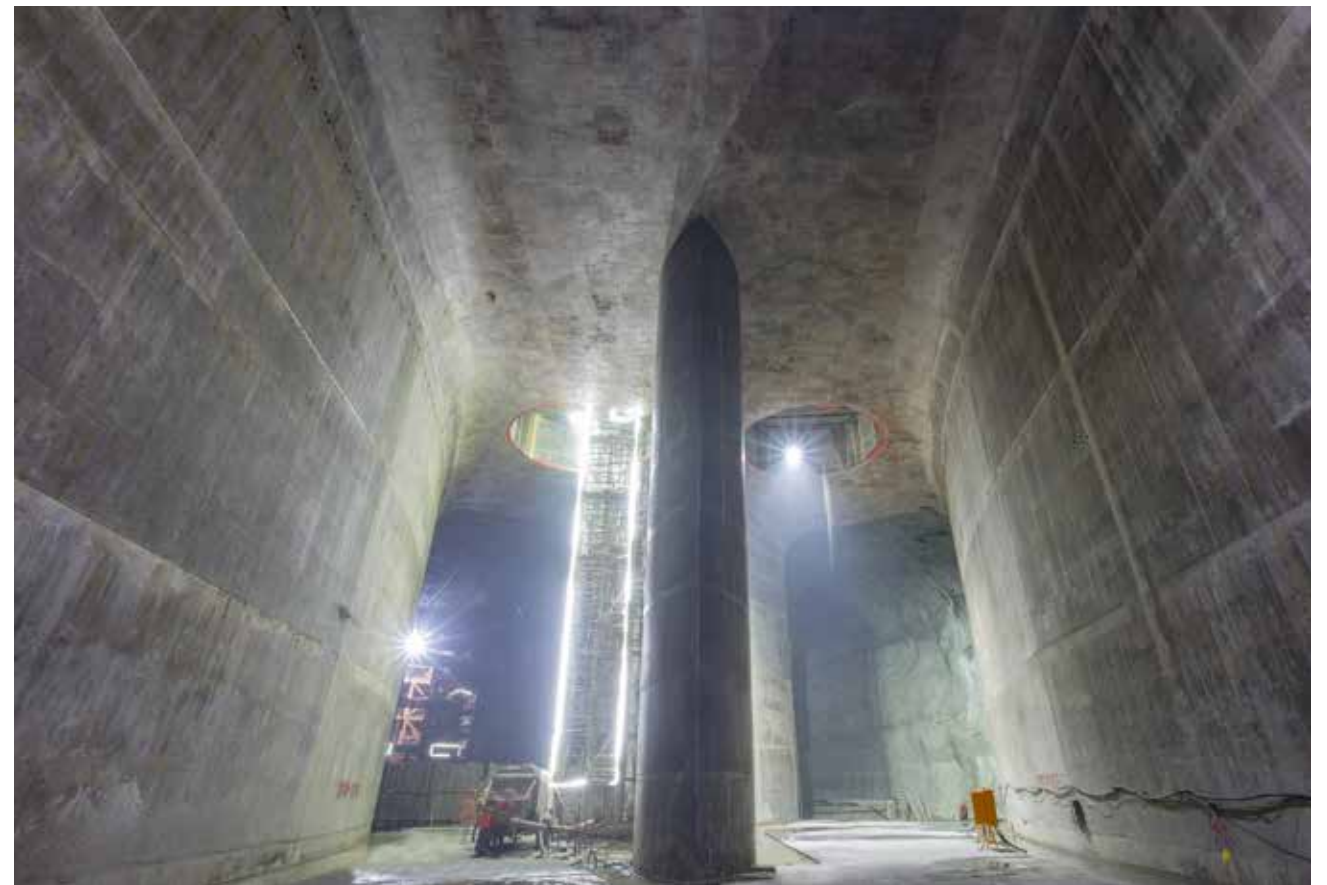


. 2017 - 2019



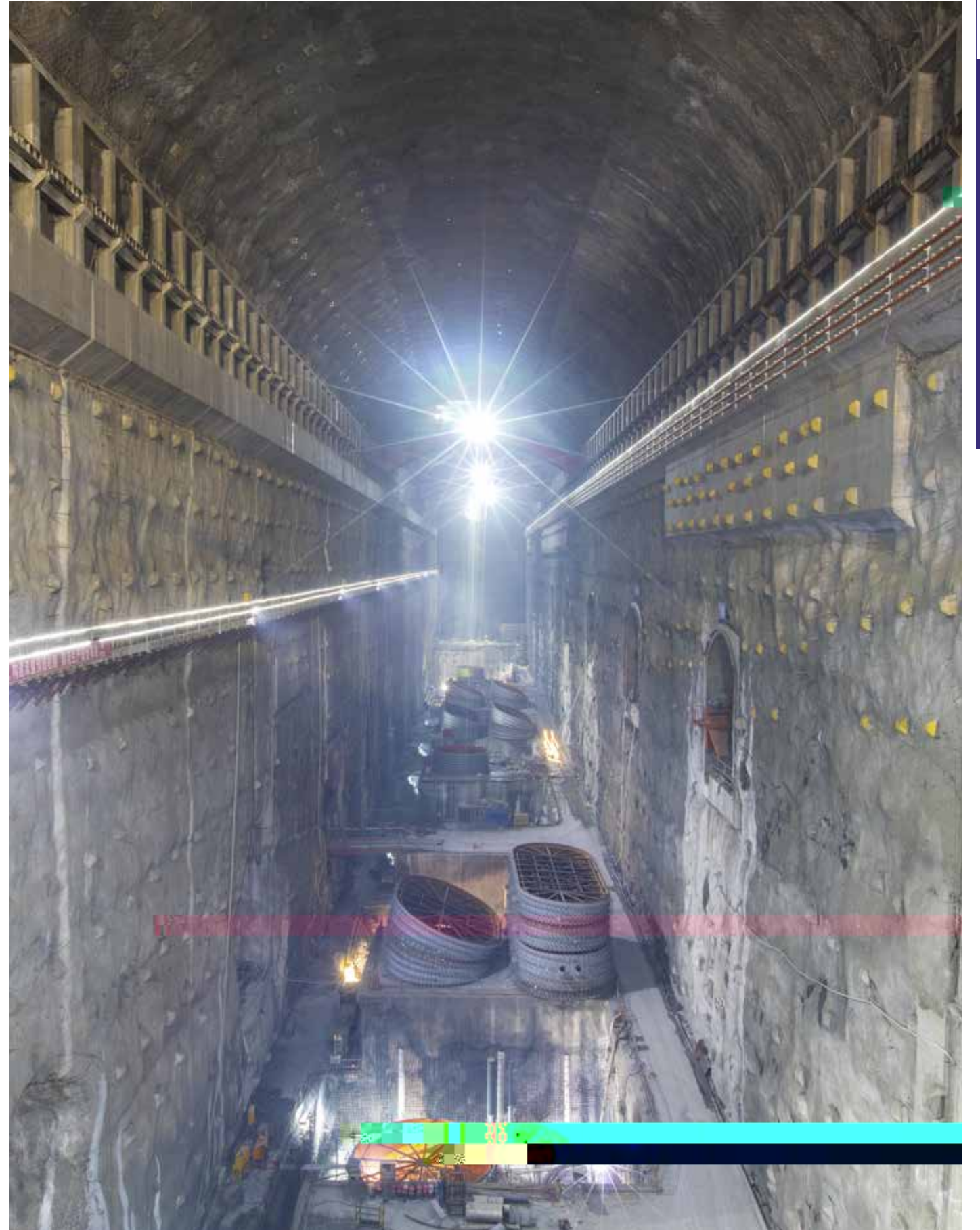


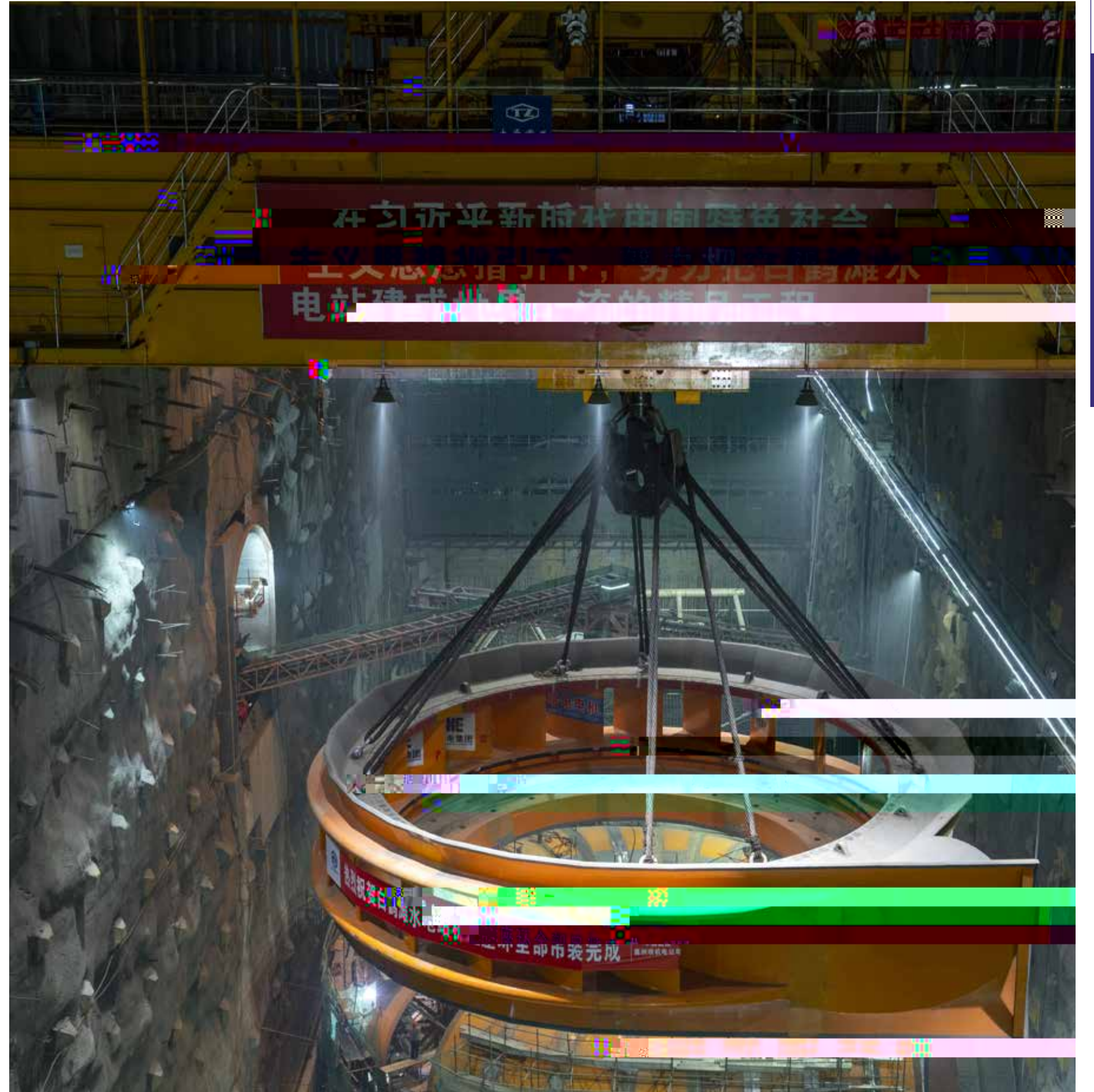
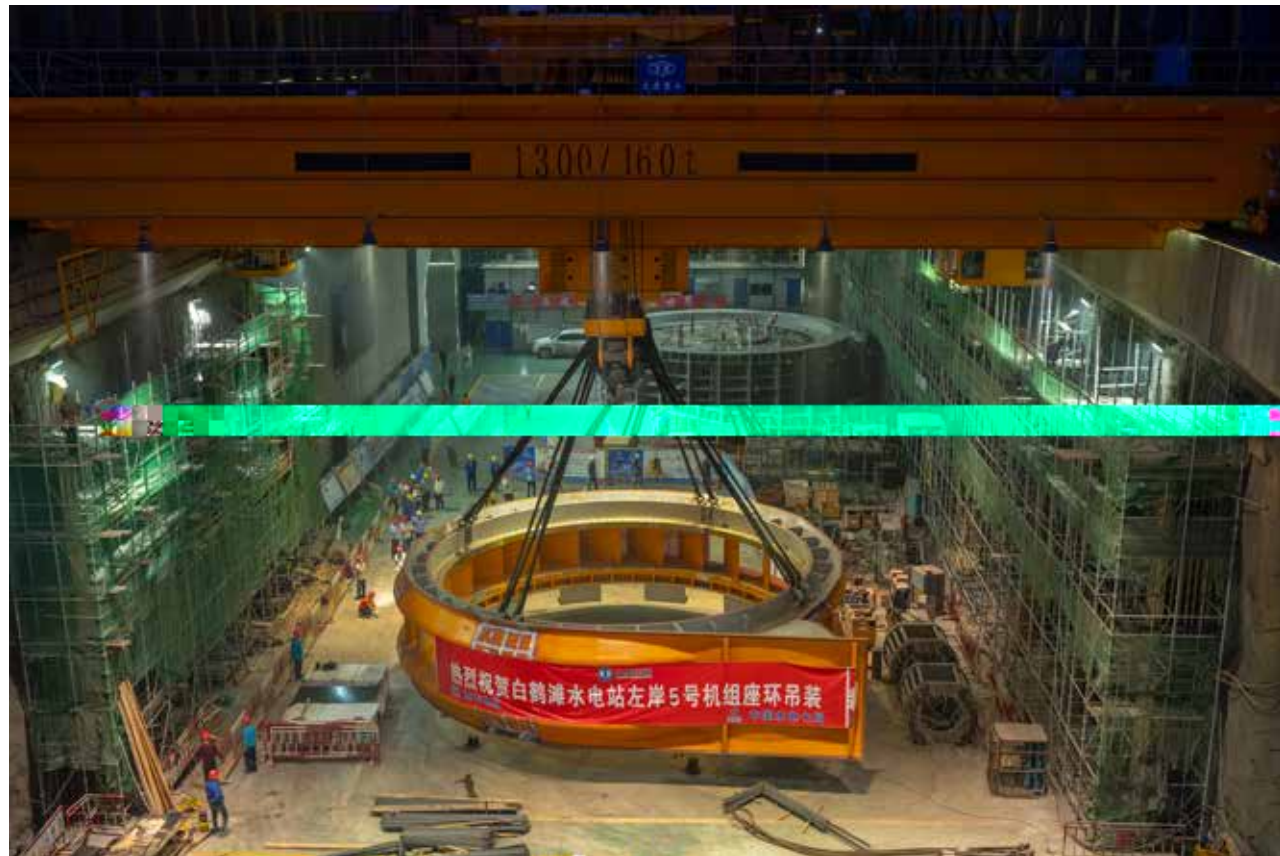
4



. 2017 - 2019

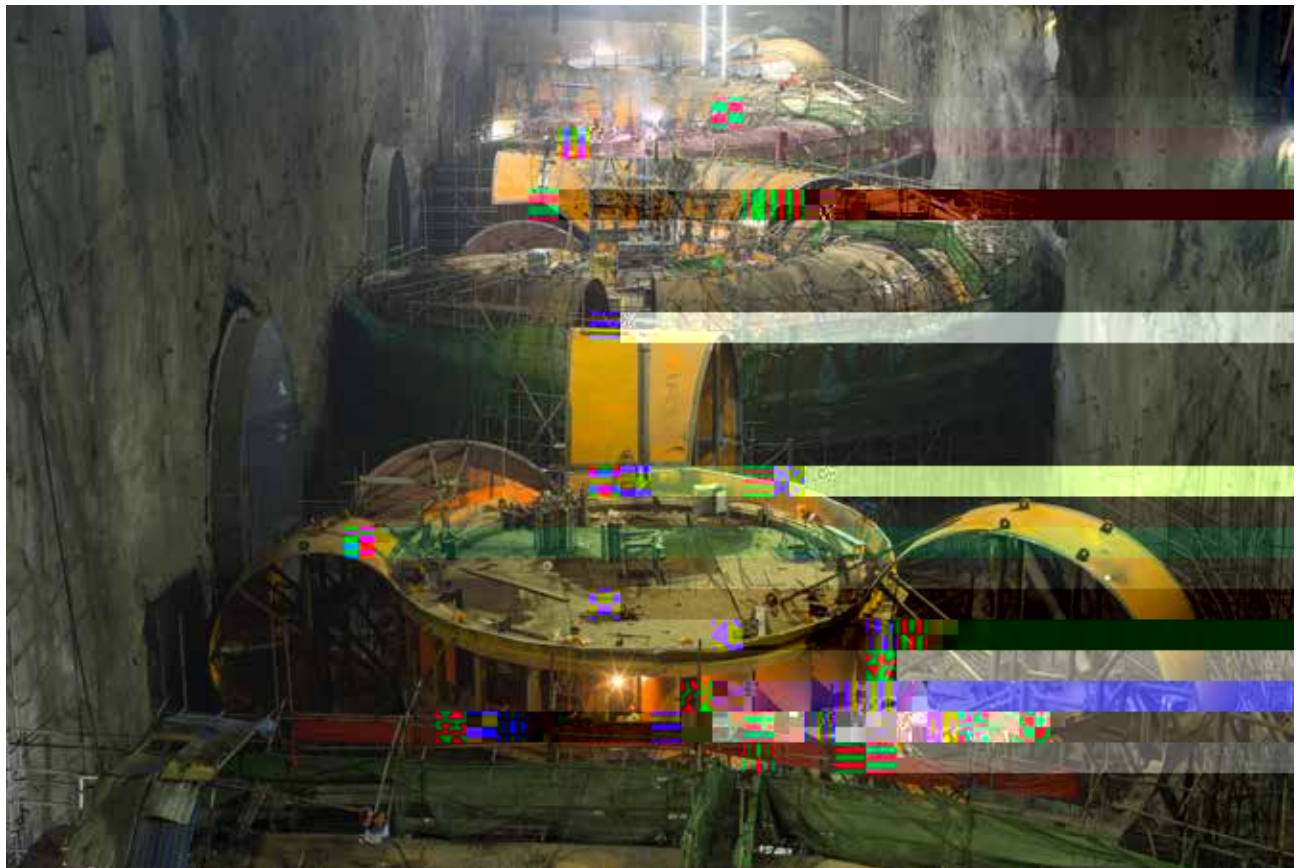






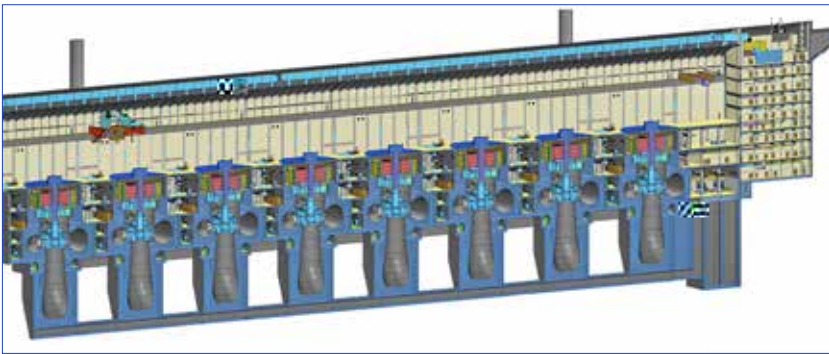
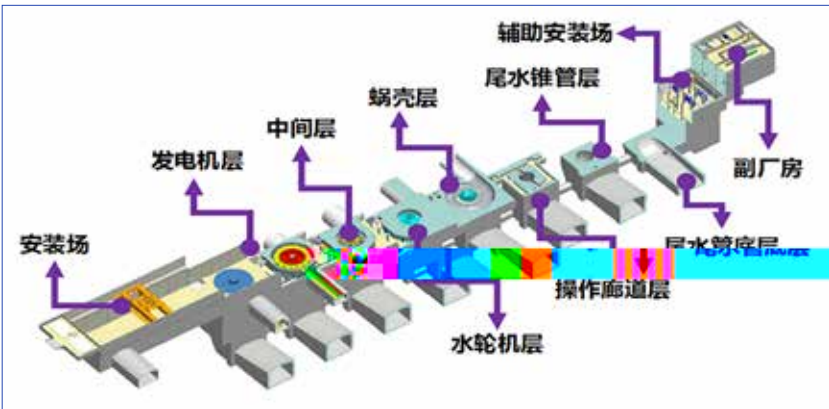
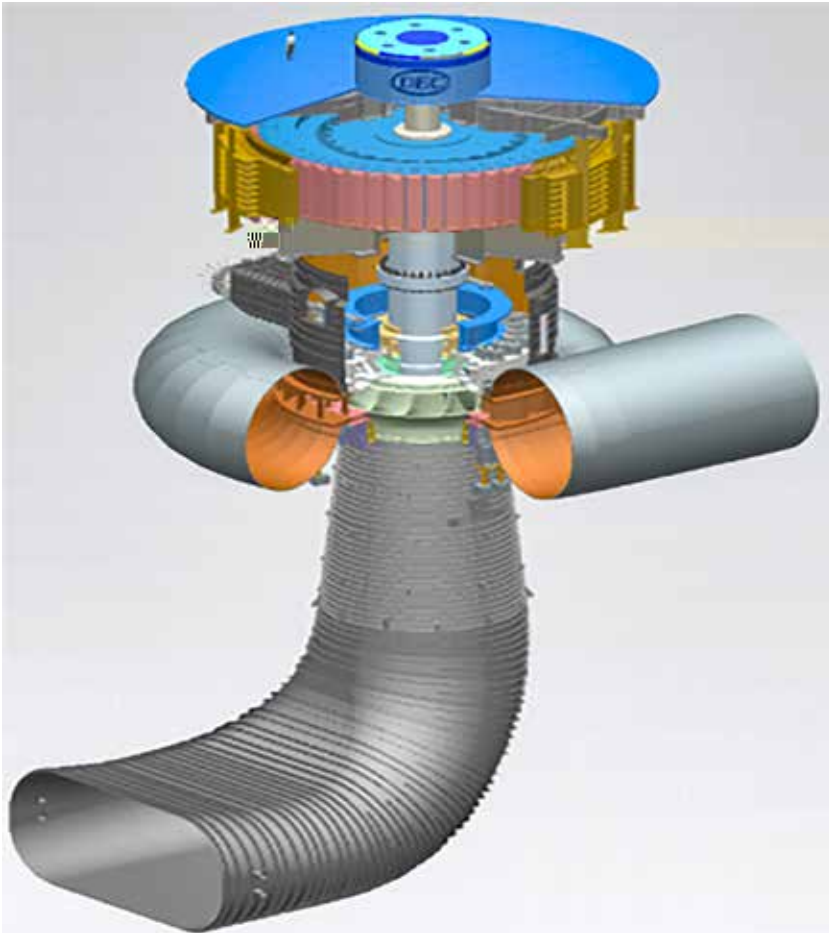
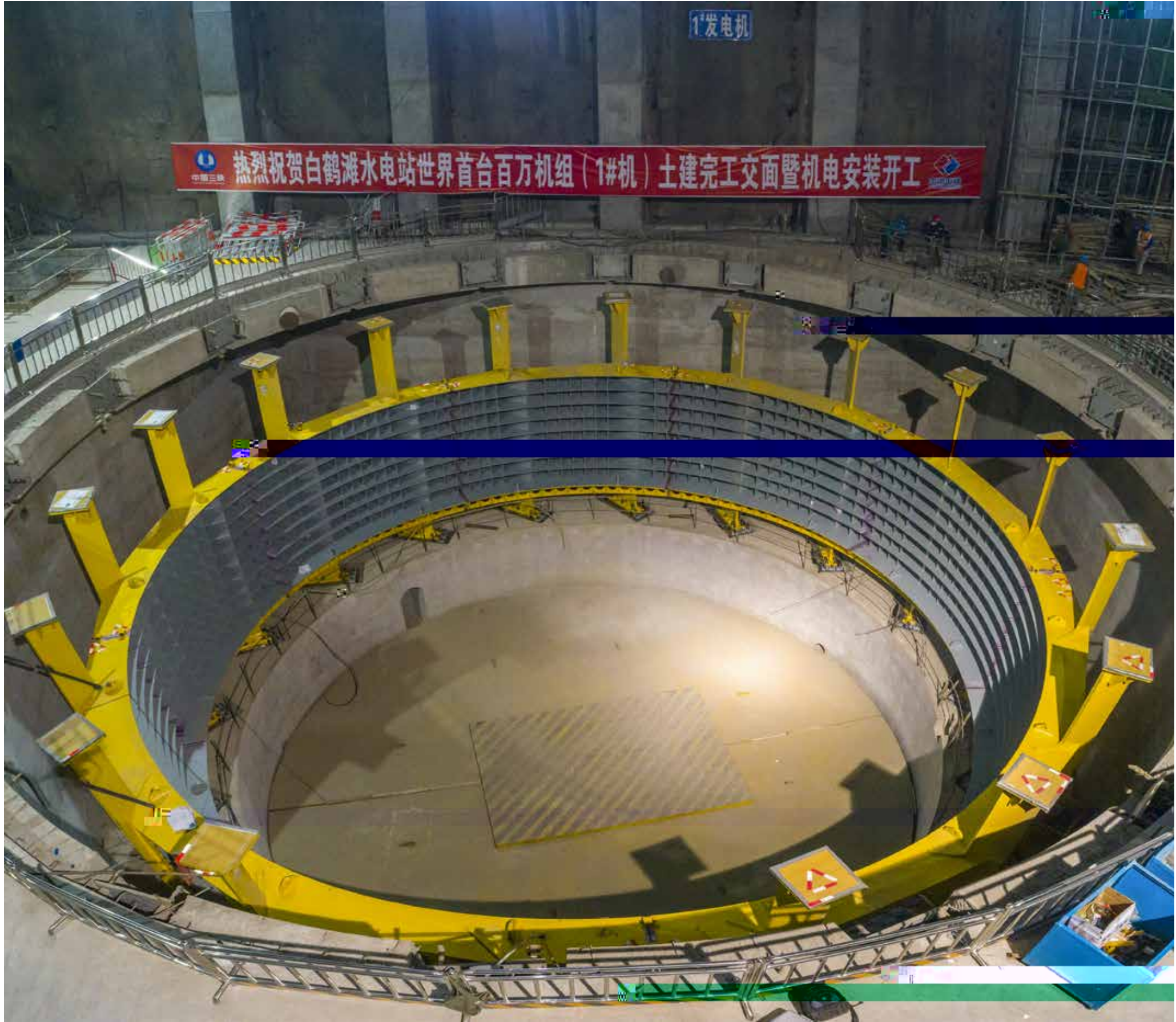


1



. 2017-2019







13 638f

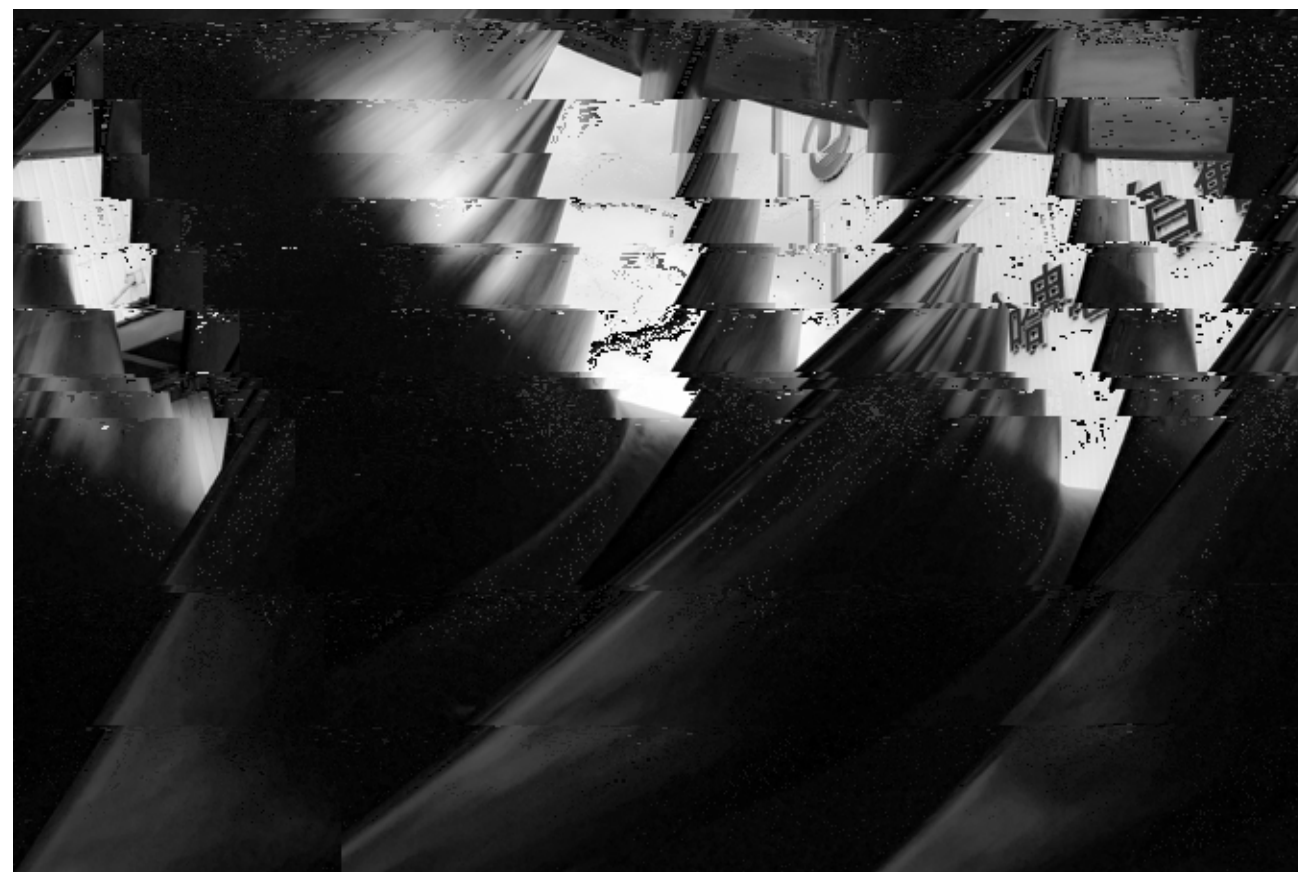
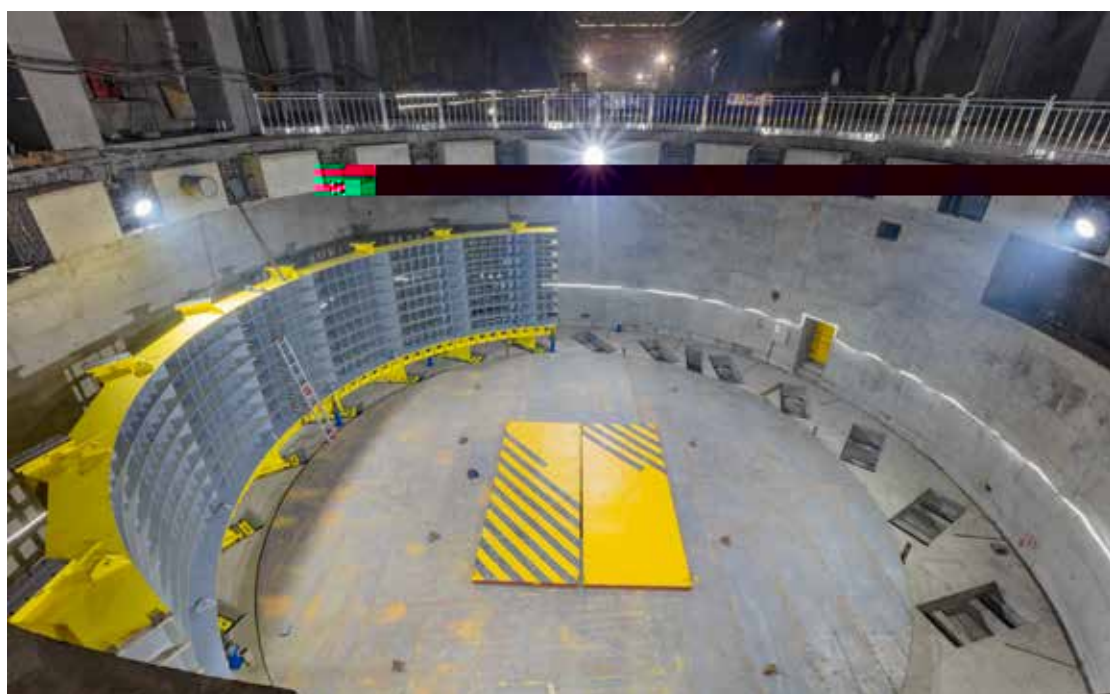
2019 4 1 2 14 15 4 1 2 14

15

2019 5 2019 11 1 2019 12

9 14

2017 7 7 16 2019 11







2017 2



2019 3



2018 2



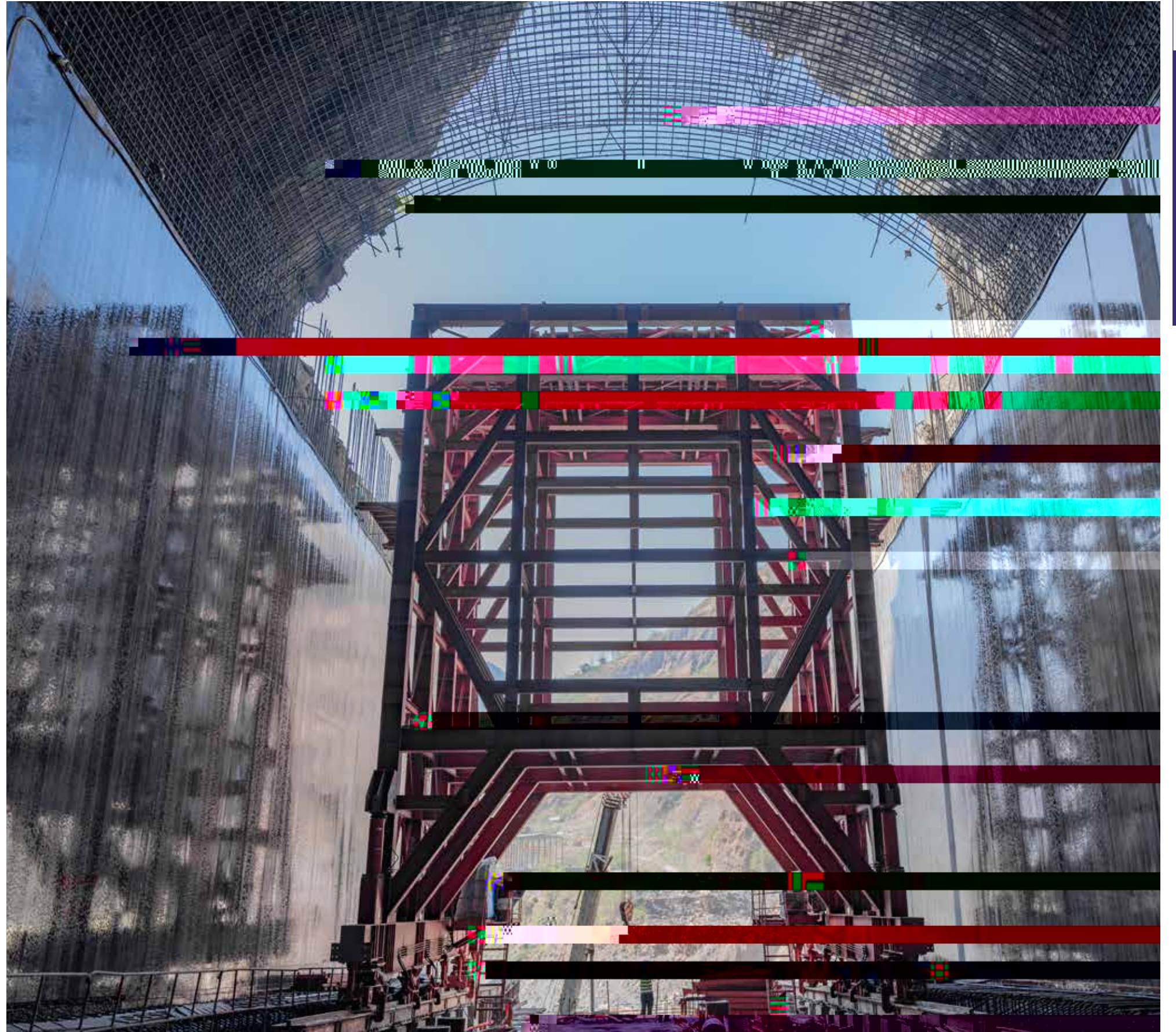
3



2019 2



2019 1



2019 3

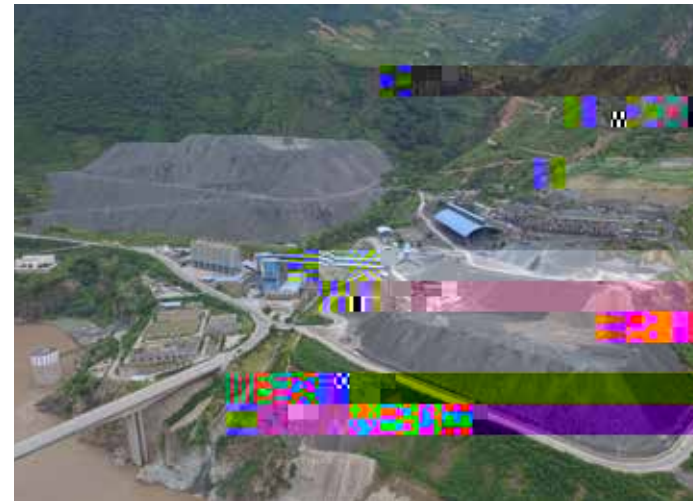


. 2017 - 2019





5
 4w4.5_3
 20_3/
 2 4w3_3
 12_3/
 26
 _3/ >@9
 47]_
 1 470_3
 1 298 f



. 2017 - 2019



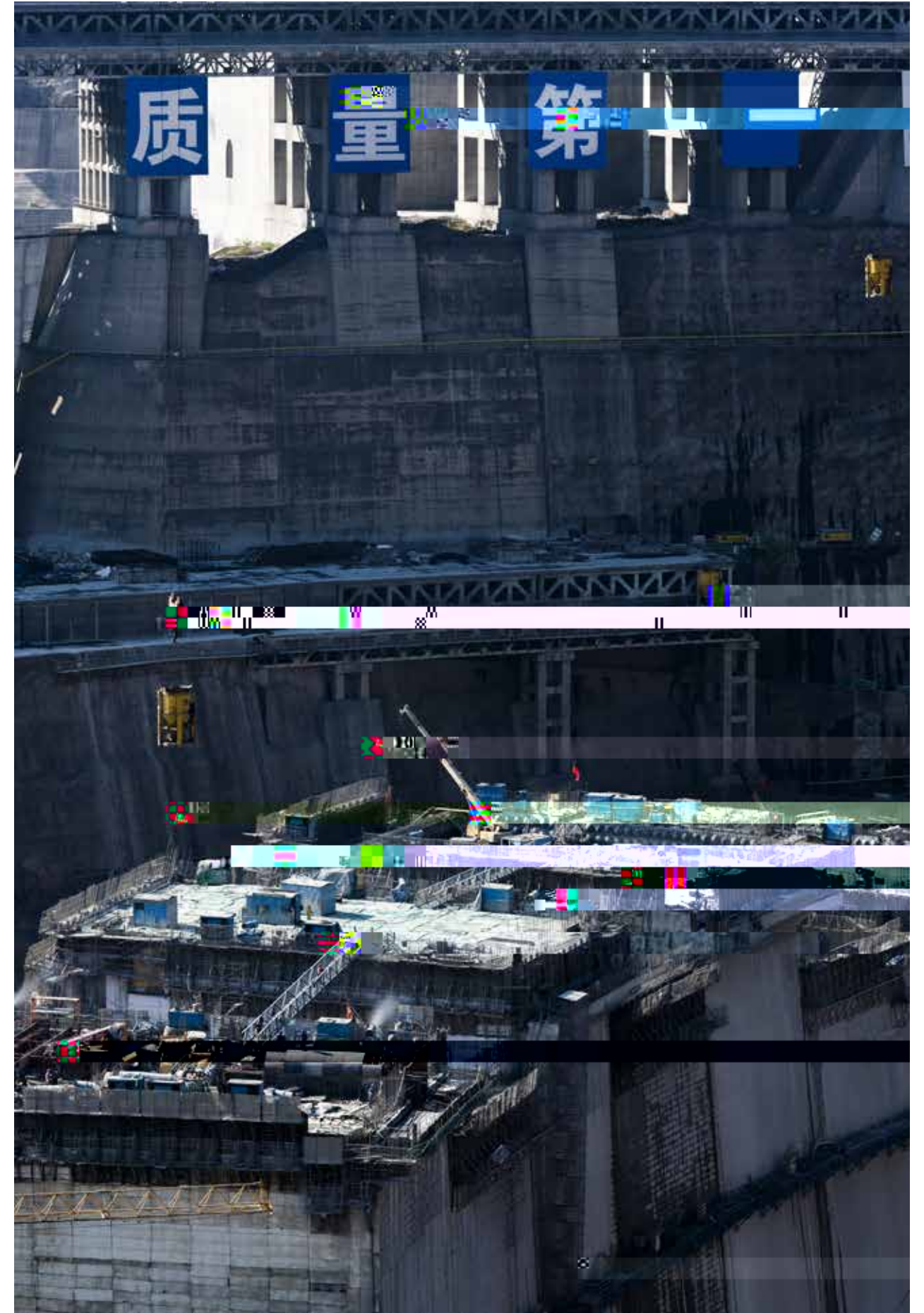
03

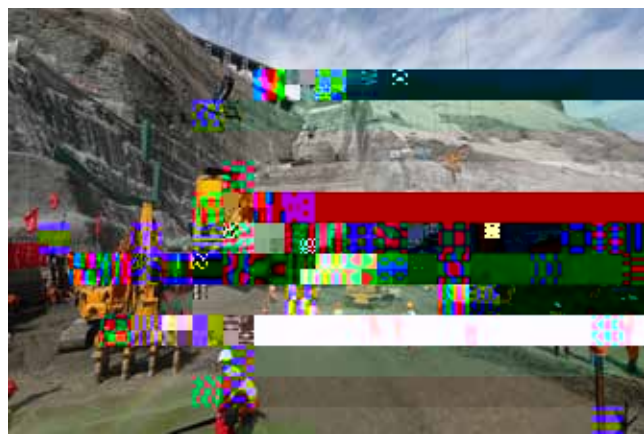
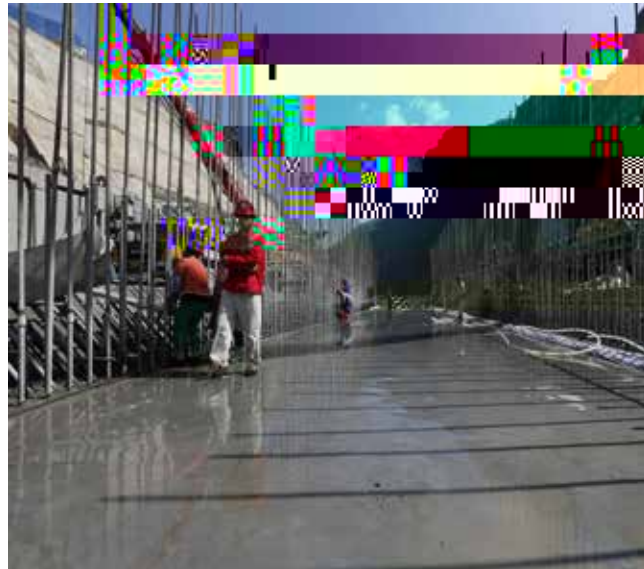
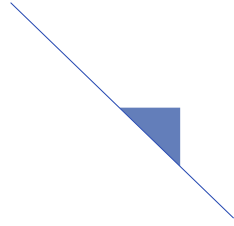
工程建设管理





2017-2019



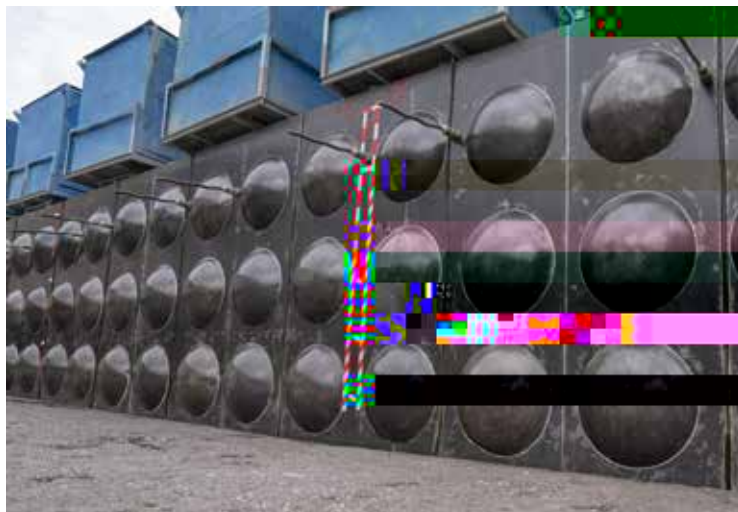


. 2017 - 2019

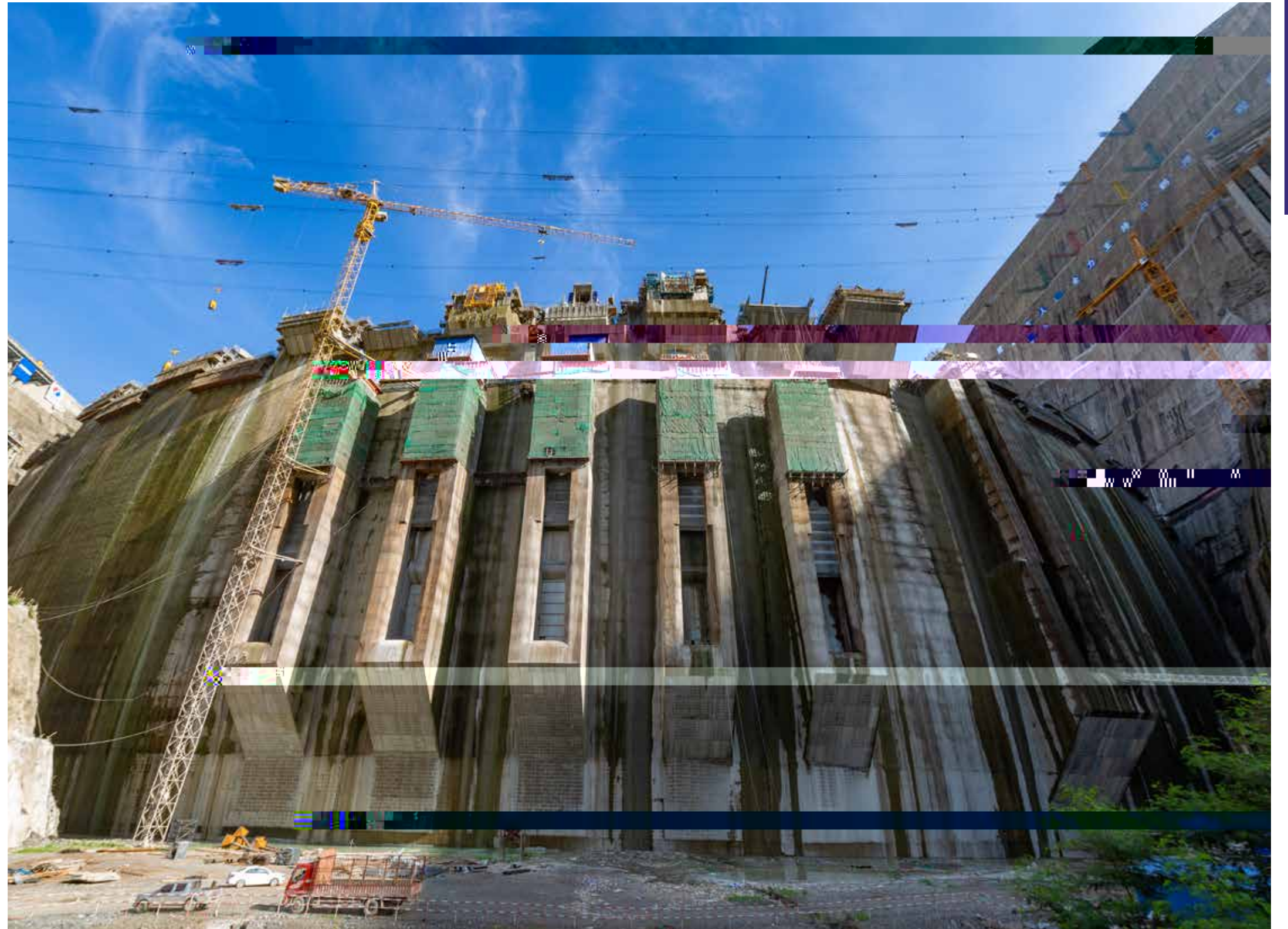




25.7_



. 2017 - 2019

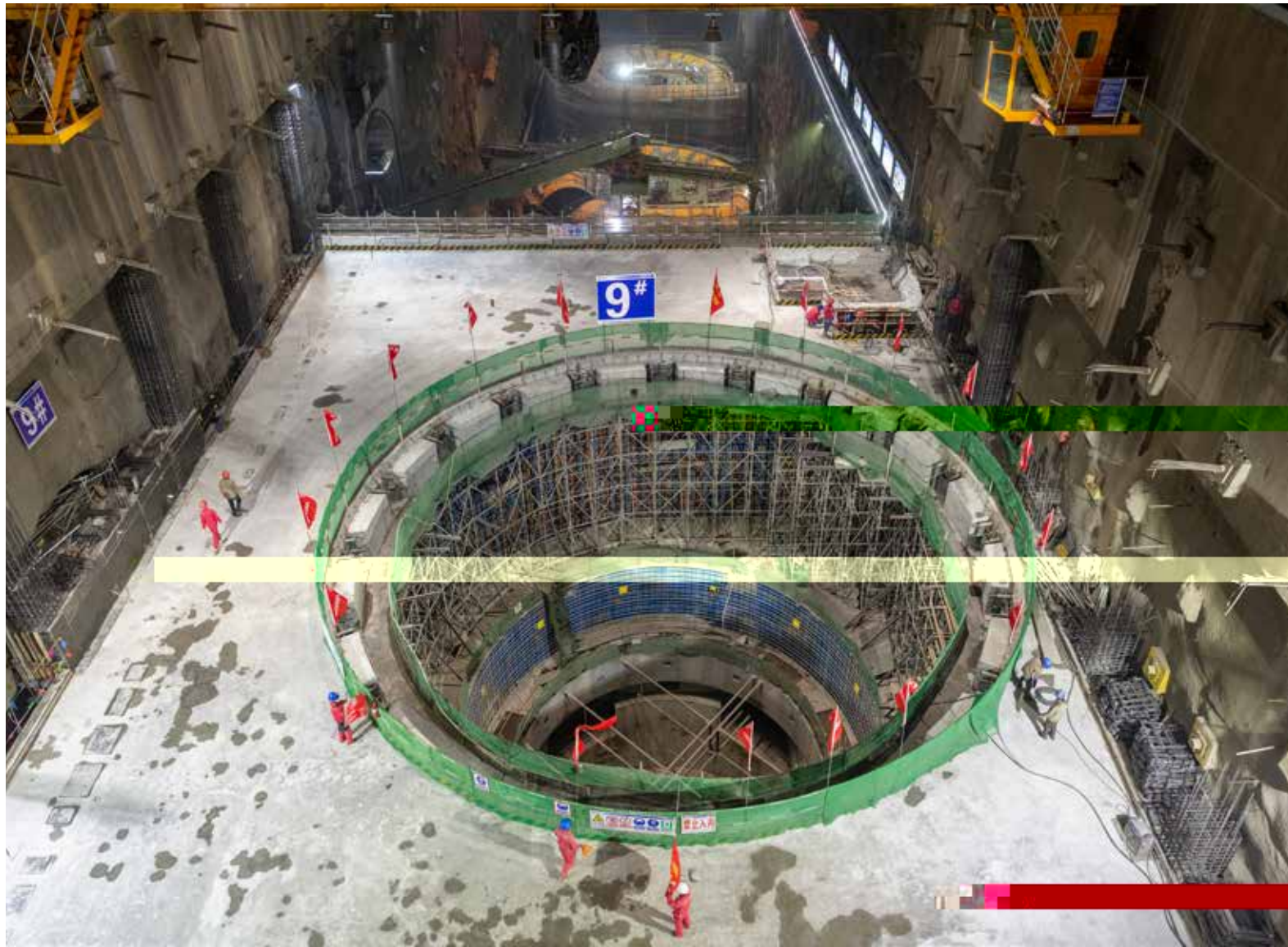








7 p10



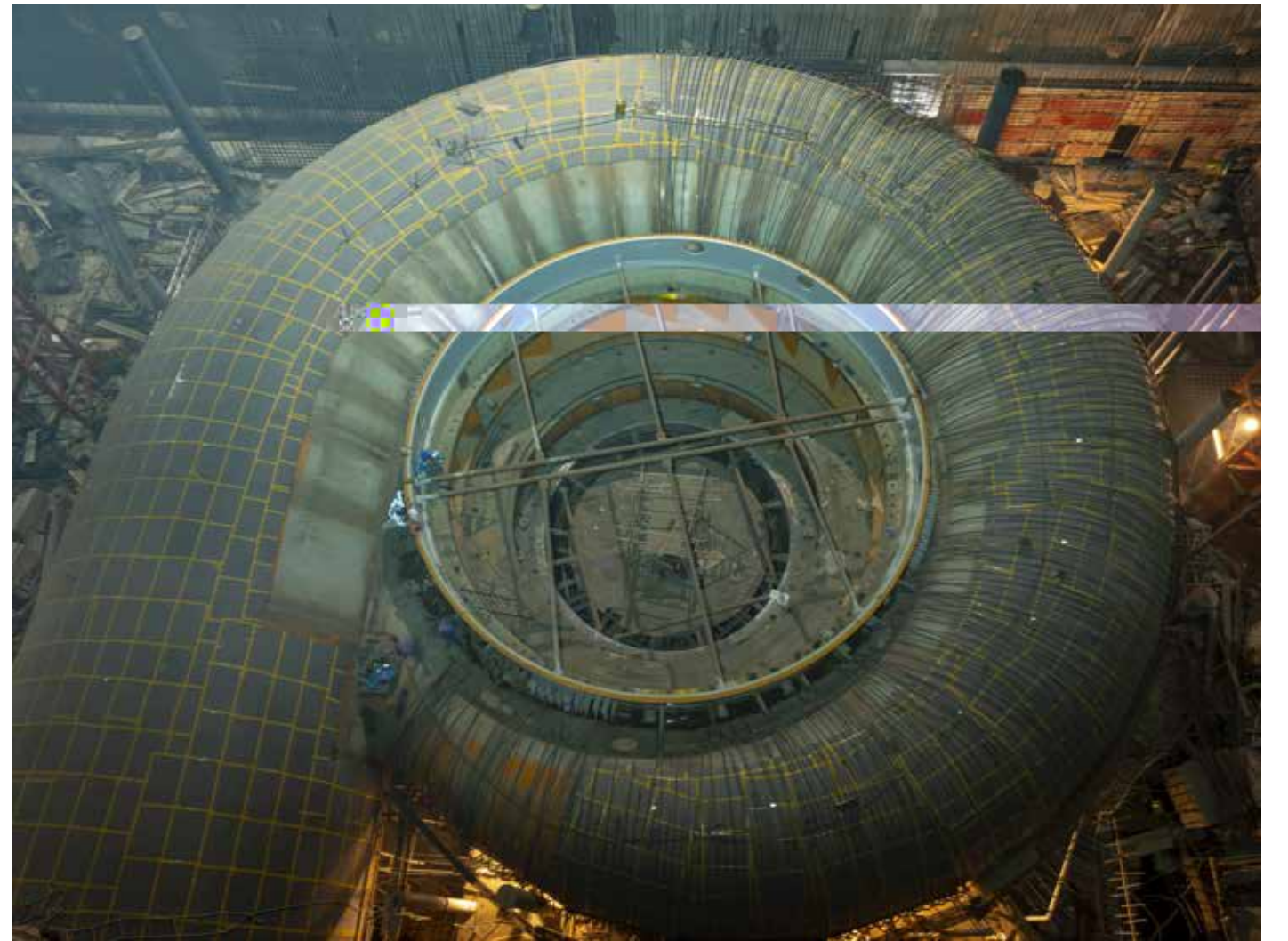
9



1

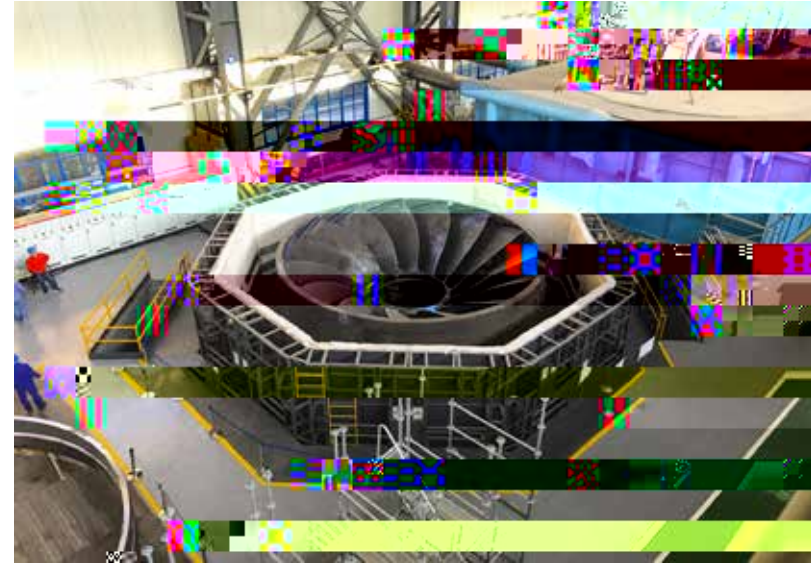


2





| | | | | | |
|--------|--------|--------|--------|----|--------|
| | | | 99.55% | | 99.66% |
| | 99.65% | | 97.10% | | |
| 2019 | 1 | 2 | 14 | 15 | 1 |
| 98.62% | 2 | | 99.62% | 14 | 99.57% |
| | | 99.63% | 1 | 2 | 14 |
| | | | | 15 | 4 |
| 4 | | | | | |



. 2017 - 2019





99%

6_ _

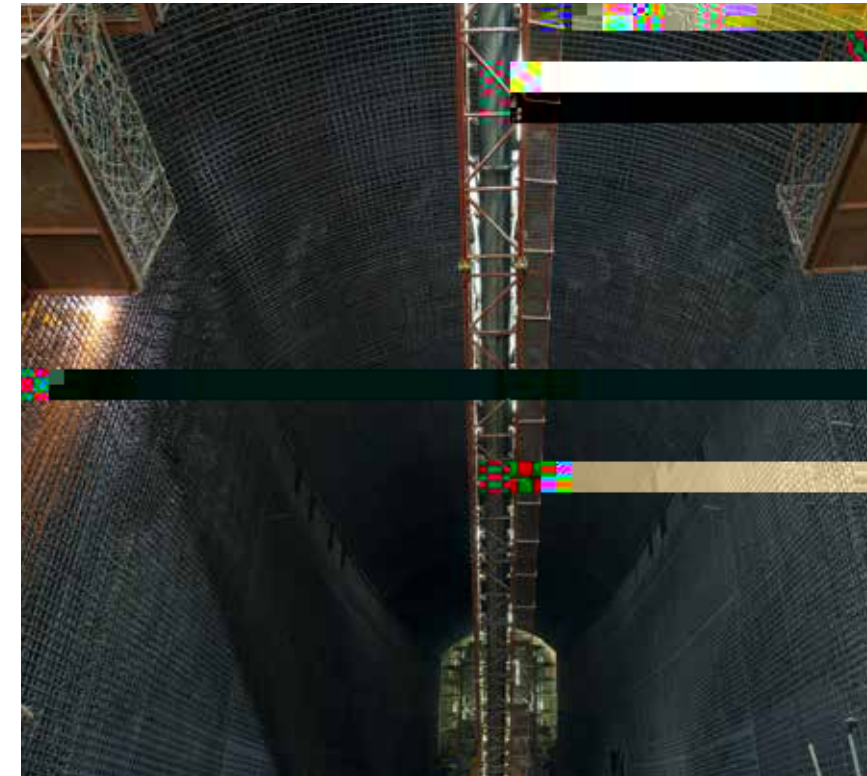
3_ _ / 2_

5p6

90



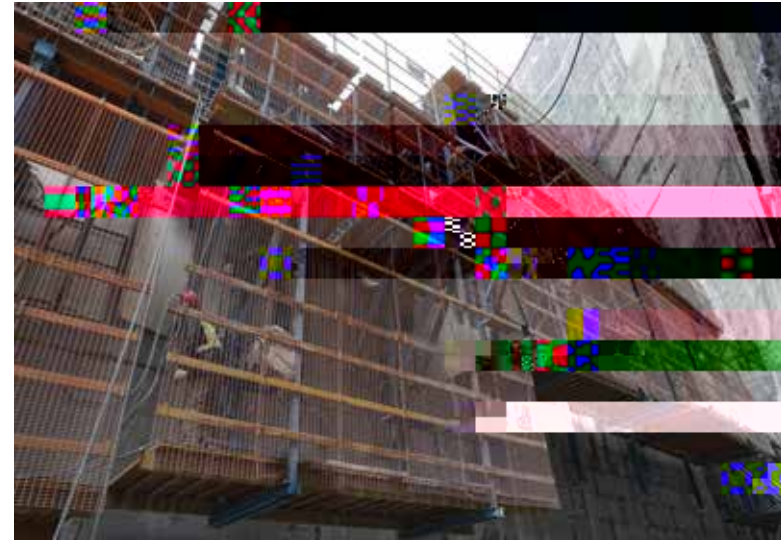
. 2017 - 2019



2



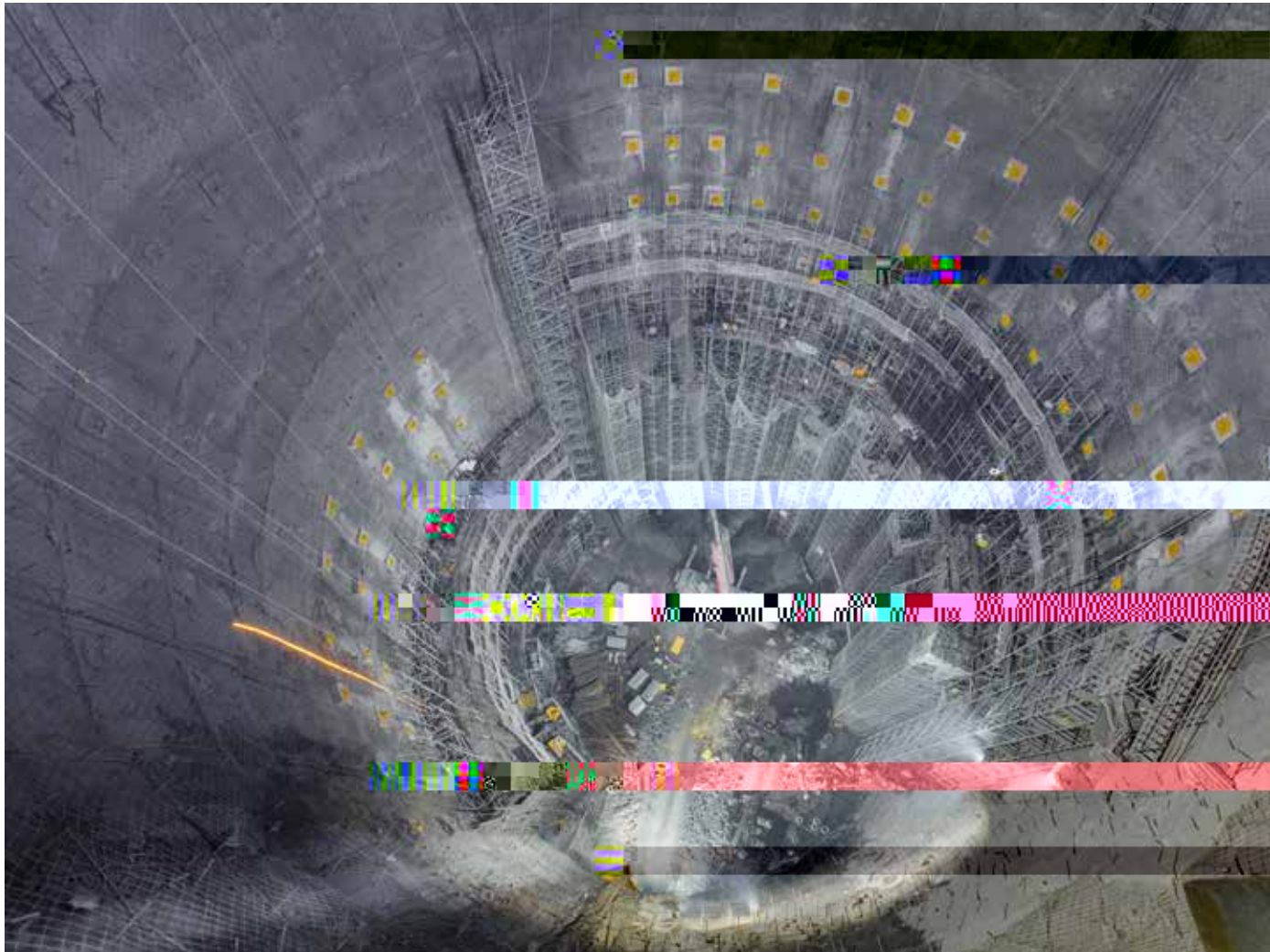
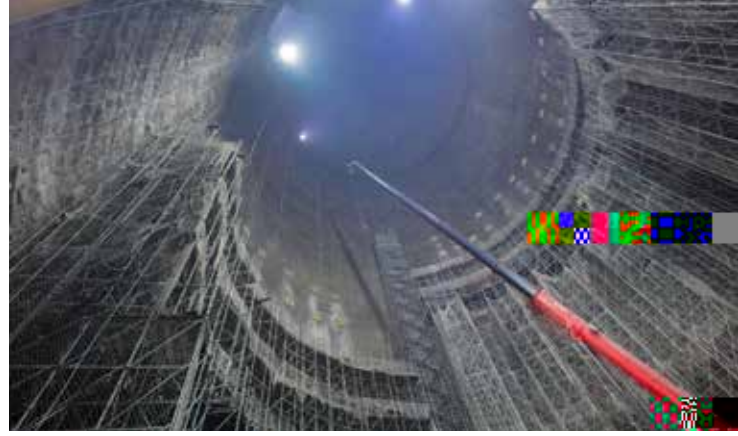




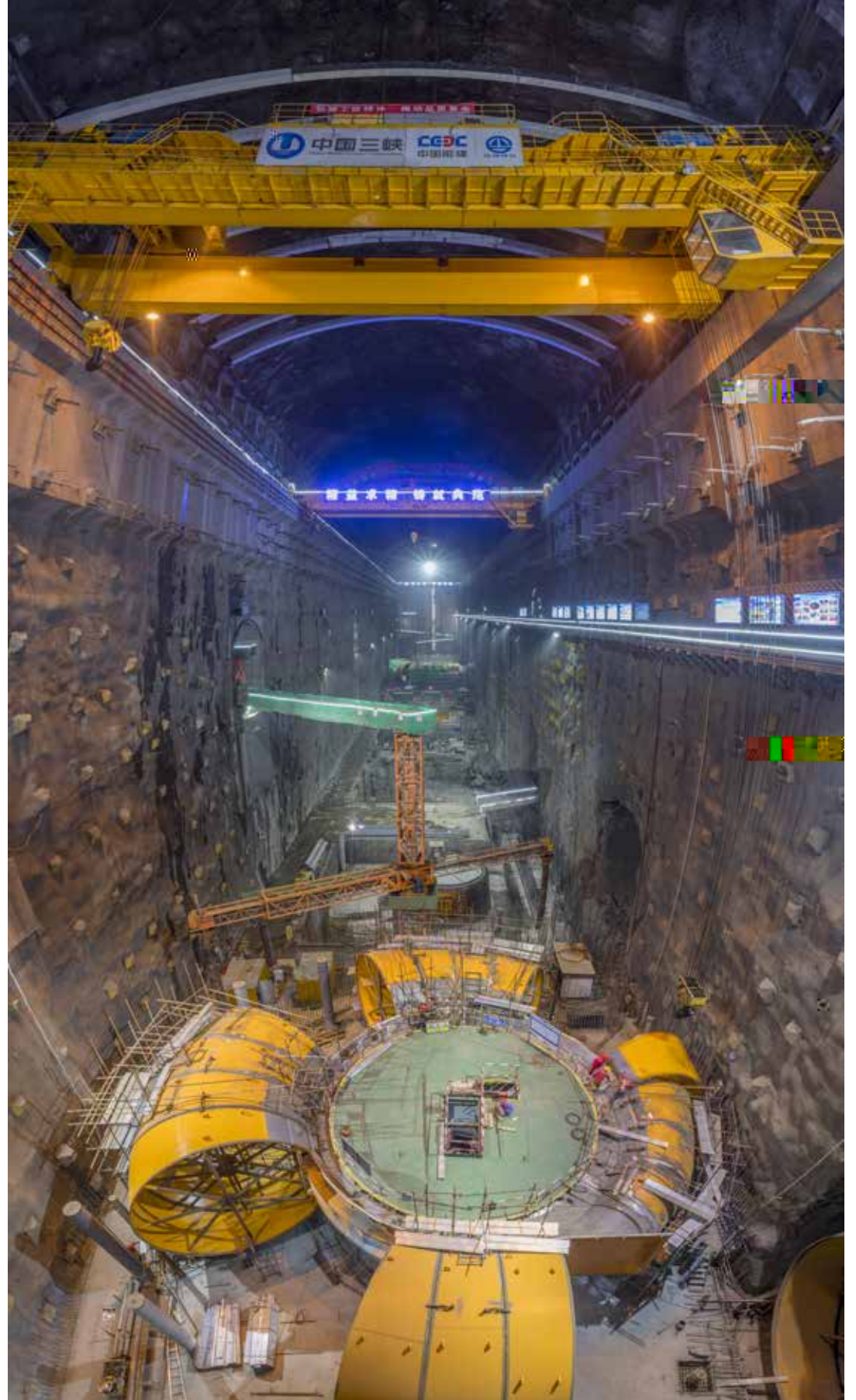
23



19



. 2017-2019

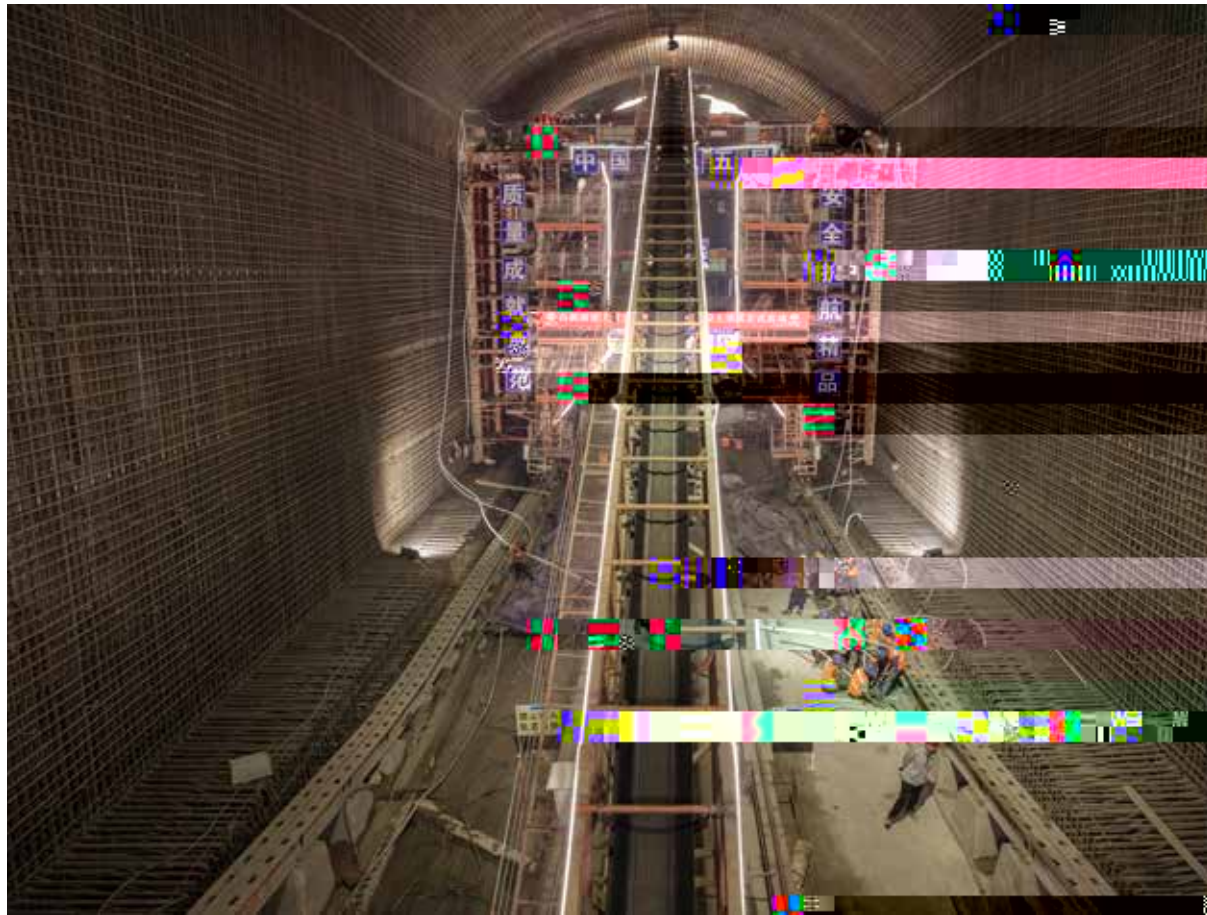




2019

7000

400_



. 2017 - 2019





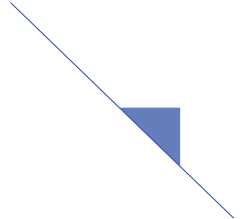
5E

1000? I



. 2017 - 2019



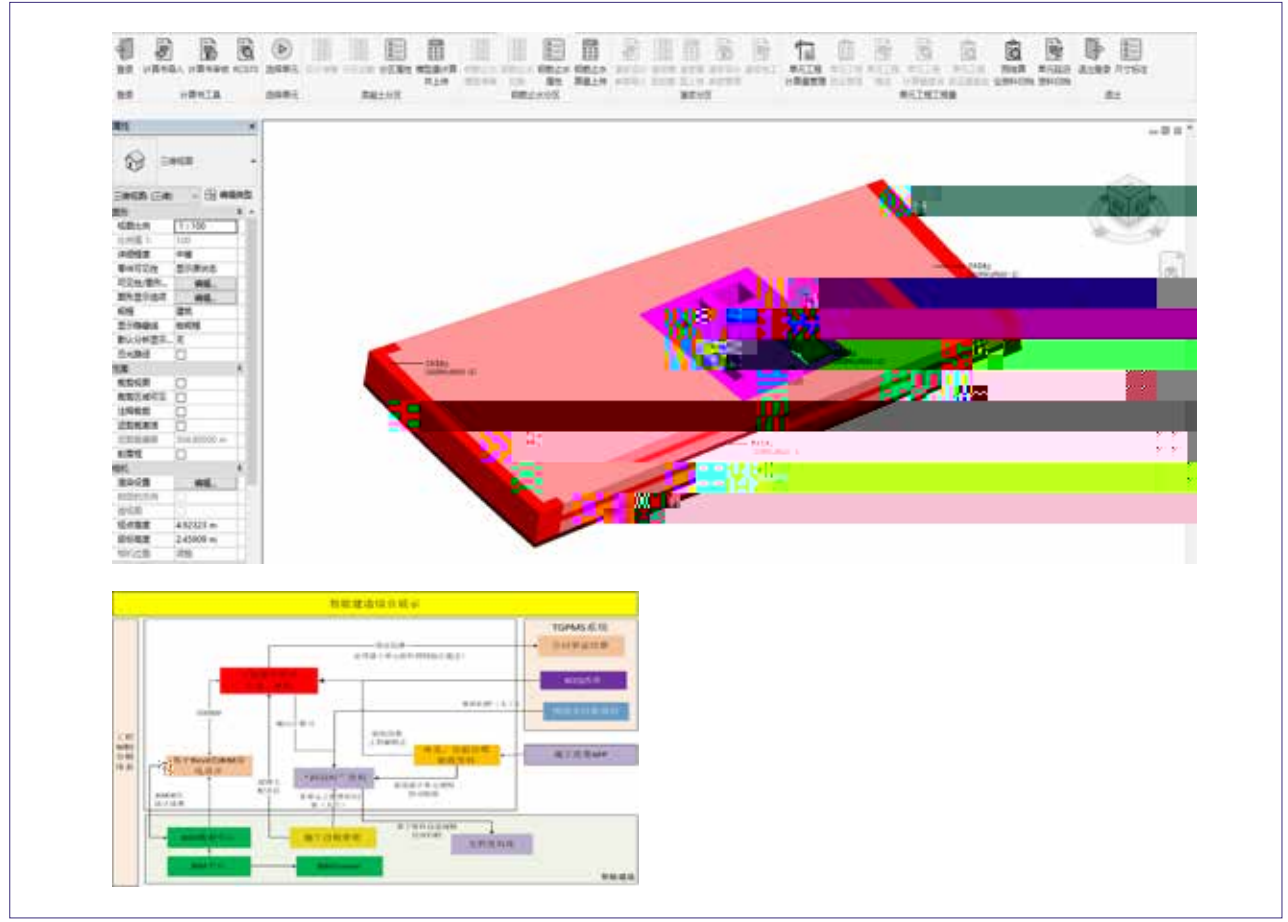


728

45%

782

1



2017-2019

2019

100%



10^3 2019 270 10^3 2019 11 27.3 10^3 2018 220
 10^3 1.2 10^3
 12
 19.6 89 26.3
 2020



. 2017-2019



1

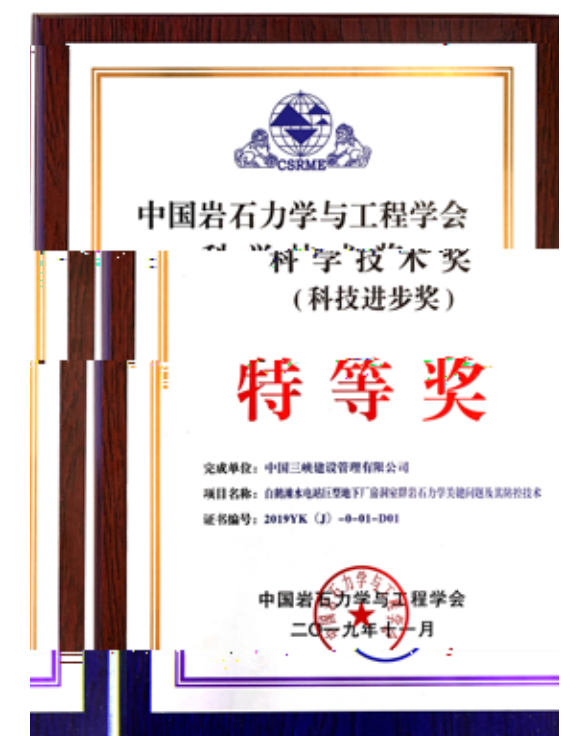
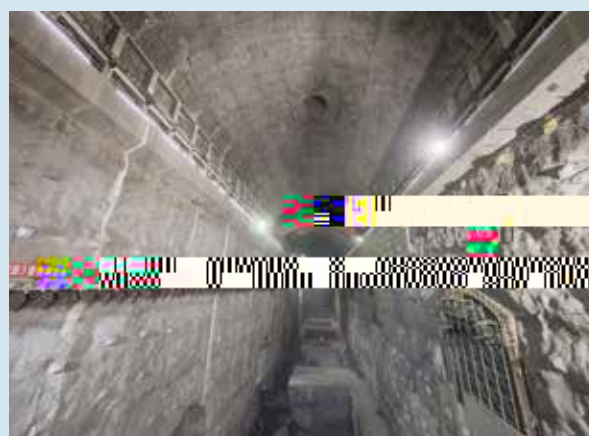
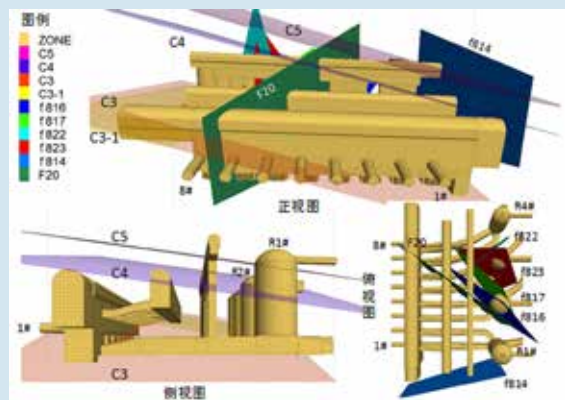
17

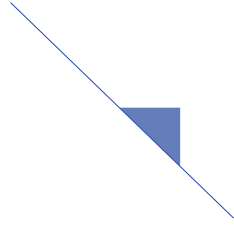
2021 7



10^3 23t
 10^3 60_ /
 10^3 6 /
 10^3 7 /







300_



. 2017 - 2019

APP

ABB

ABB

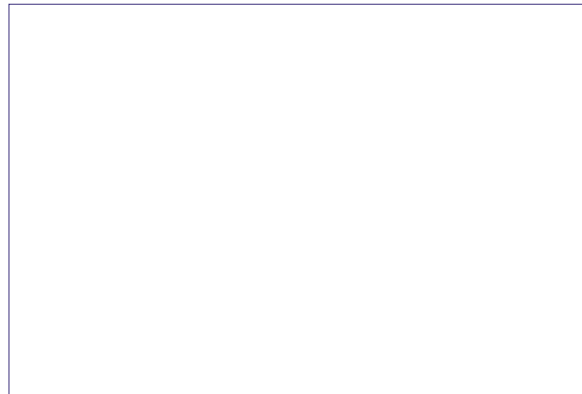
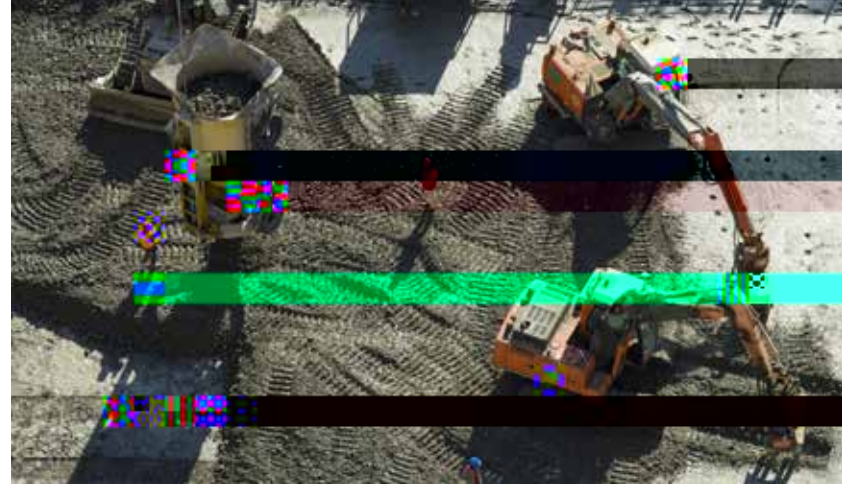
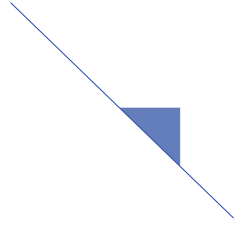
ABB



L|YBWW



18

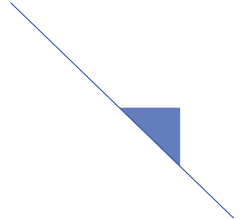


64



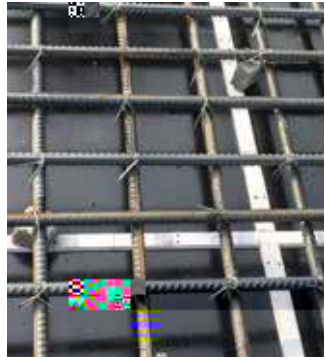
. 2017-2019





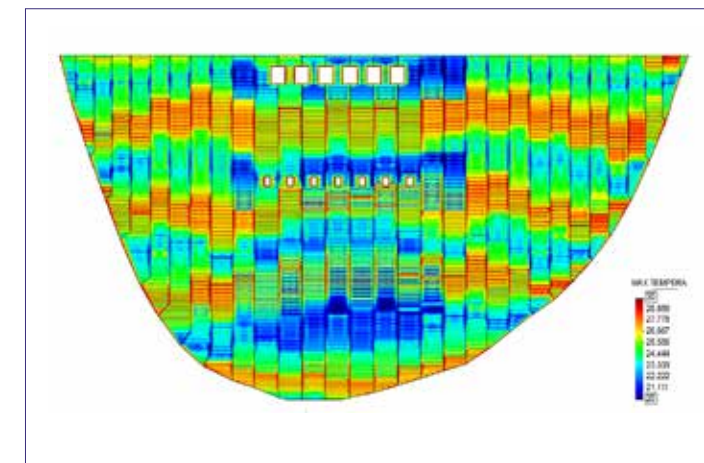
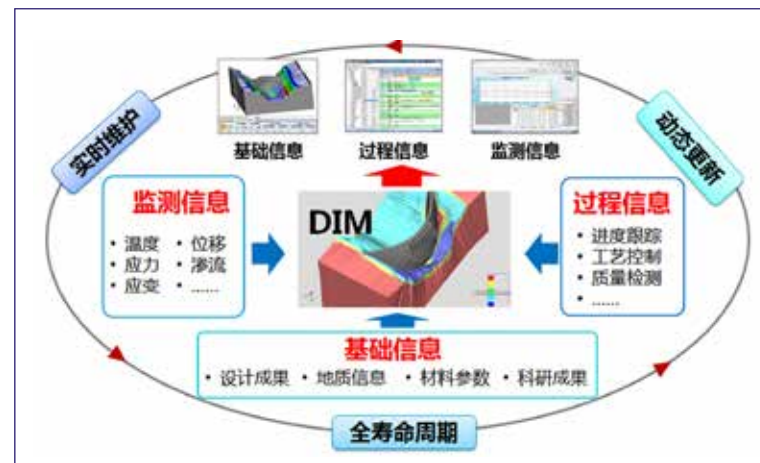
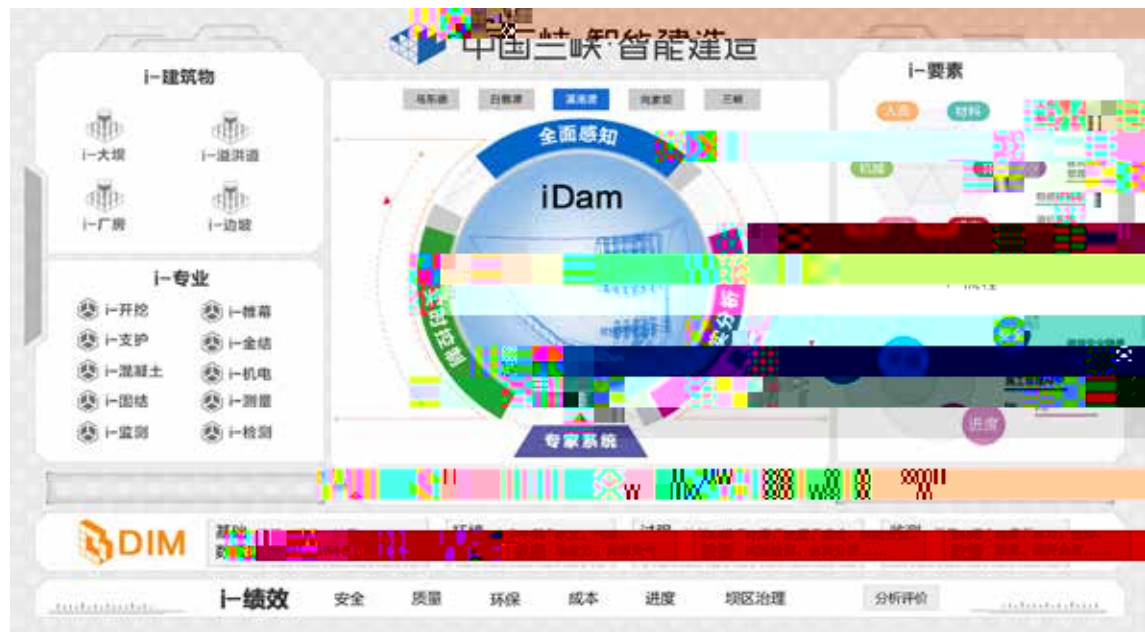
I ;EA

Ot 180t E

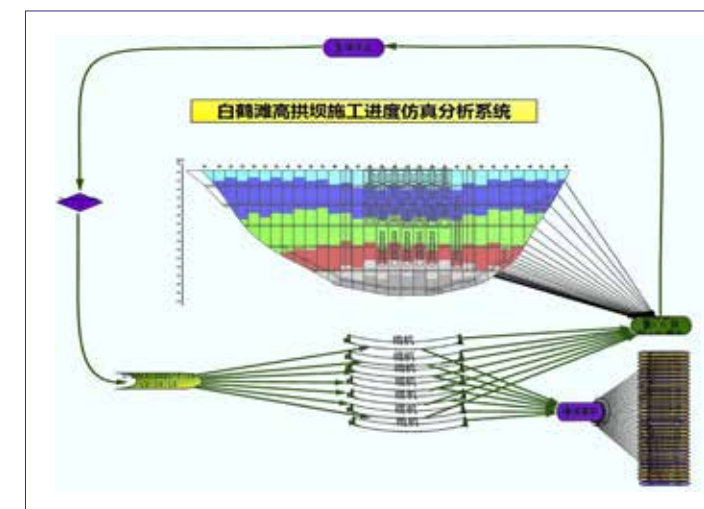
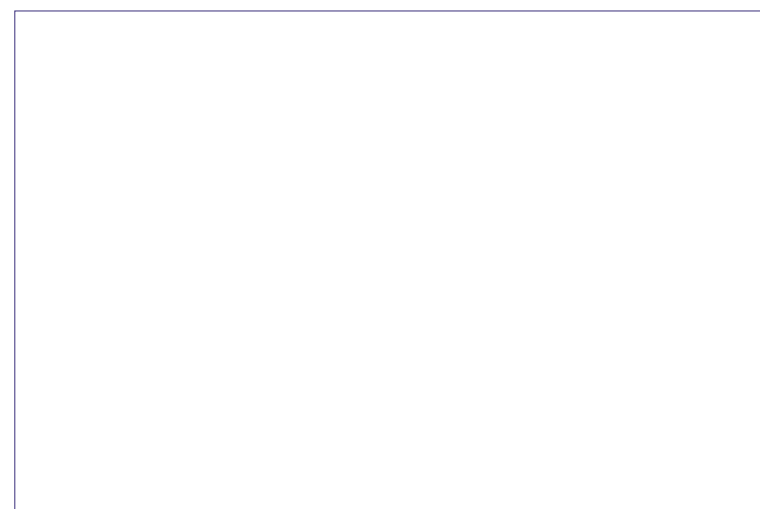
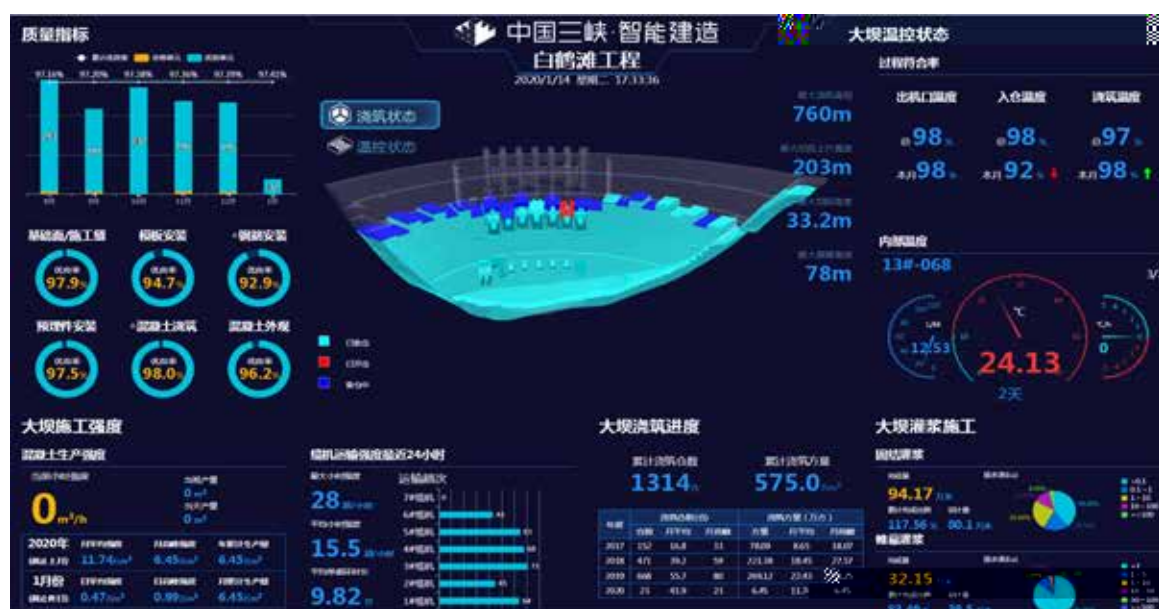
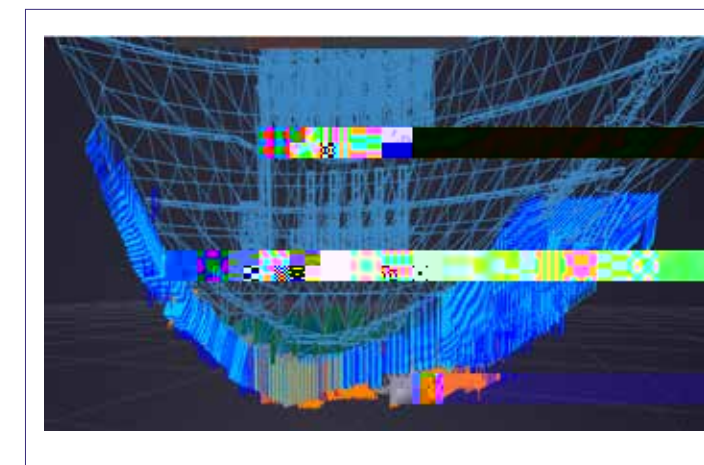
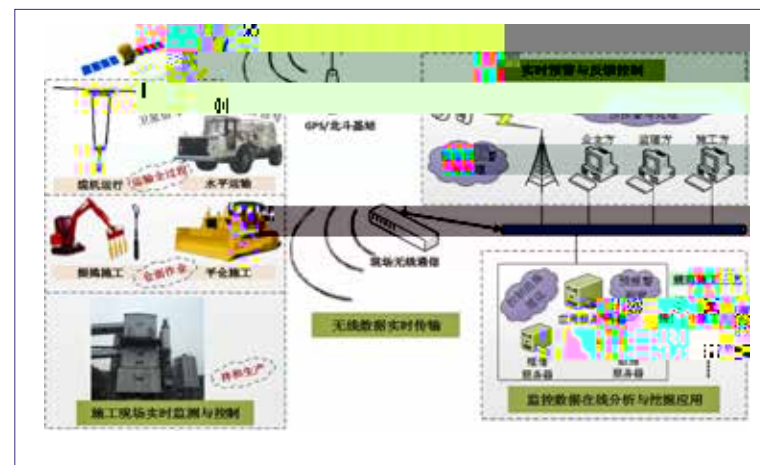


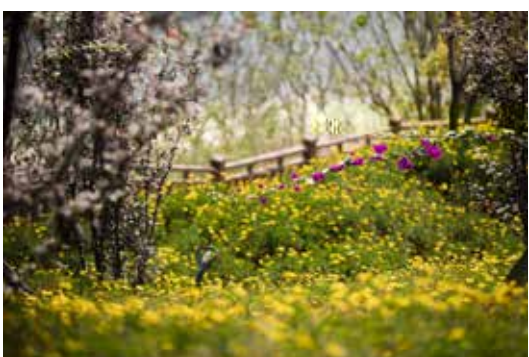
. 2017-2019





DIM



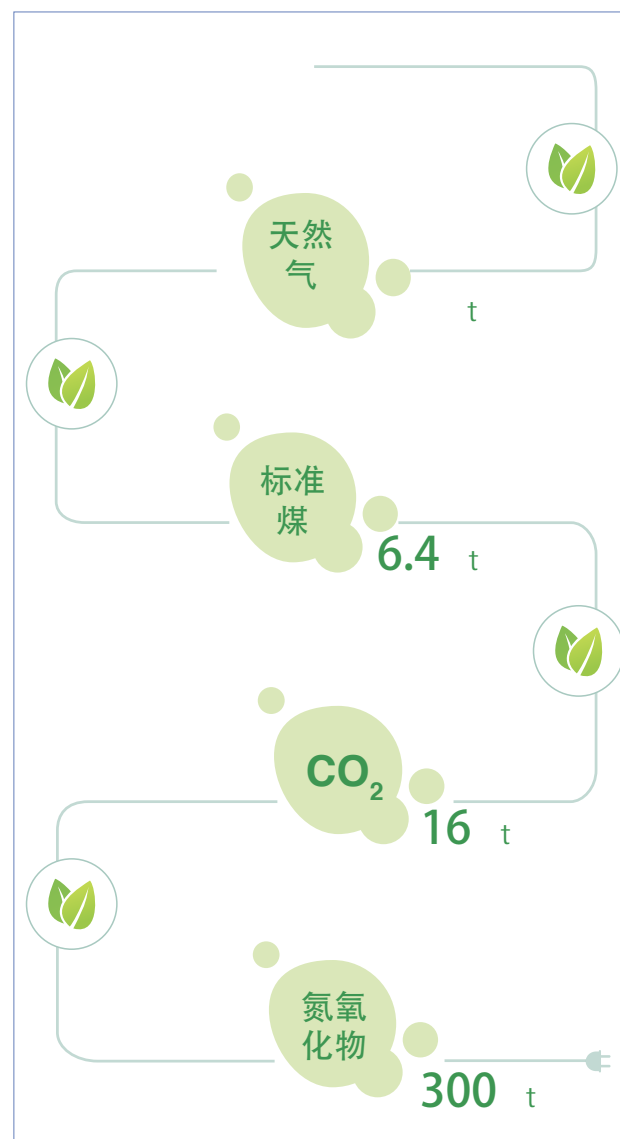
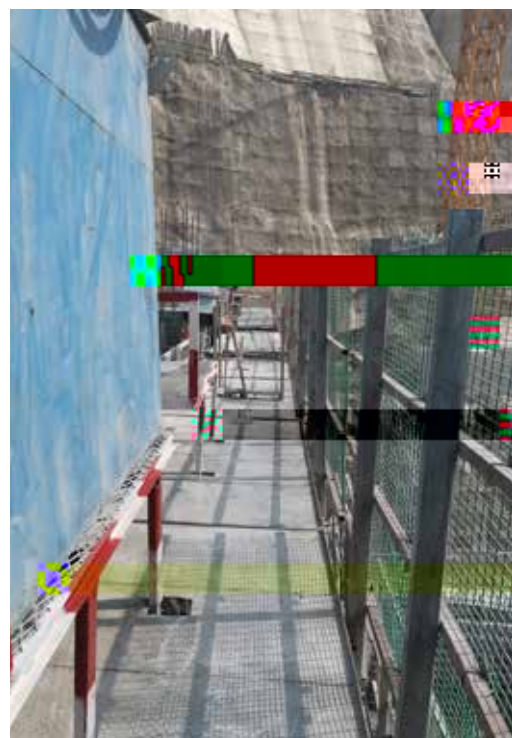
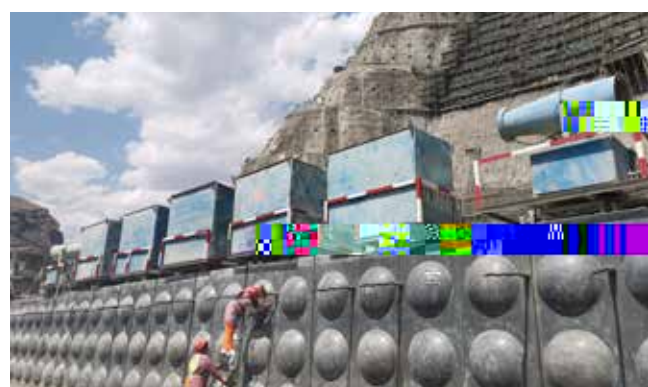


. 2017 - 2019





300



>@9
6.4 f

16 f

300 f

3 f

1000
6400 f

2000 f



2017-2019





高举民族团结旗帜 携手迈向小康生活
弘扬优秀传统文化 促进民族团结

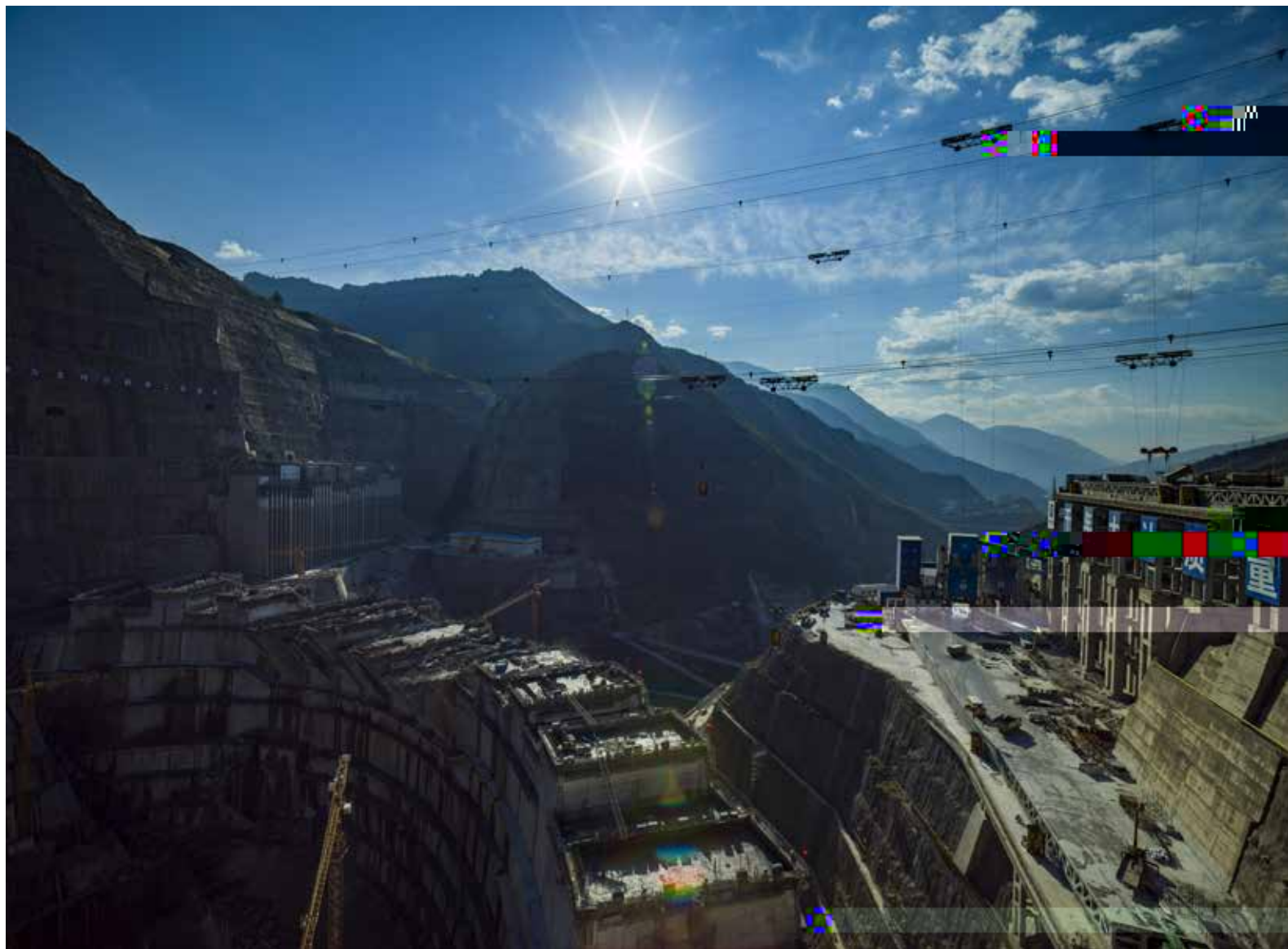


2019
4
4

2

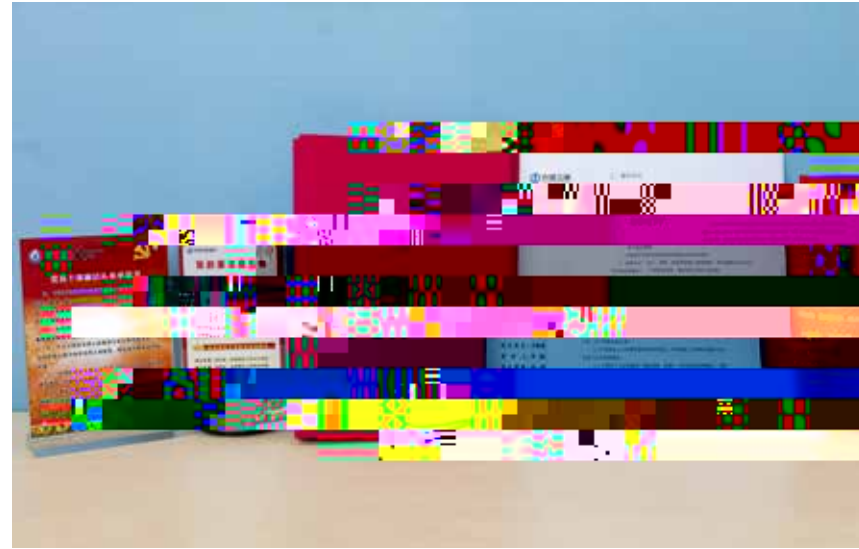
2017





2017-2019

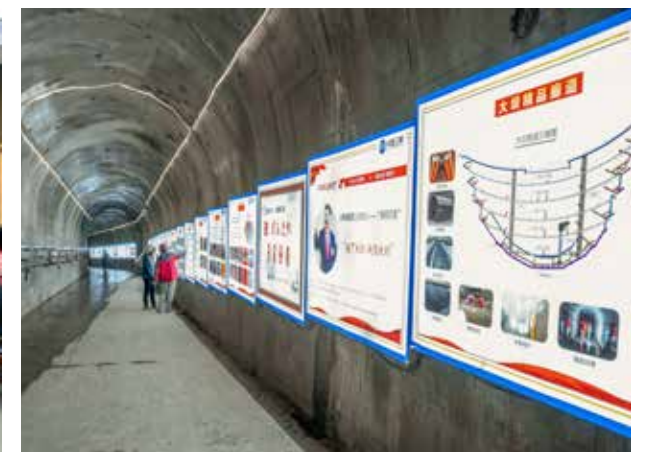


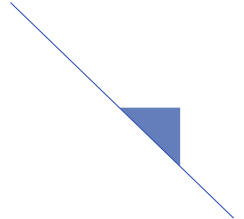


5



7





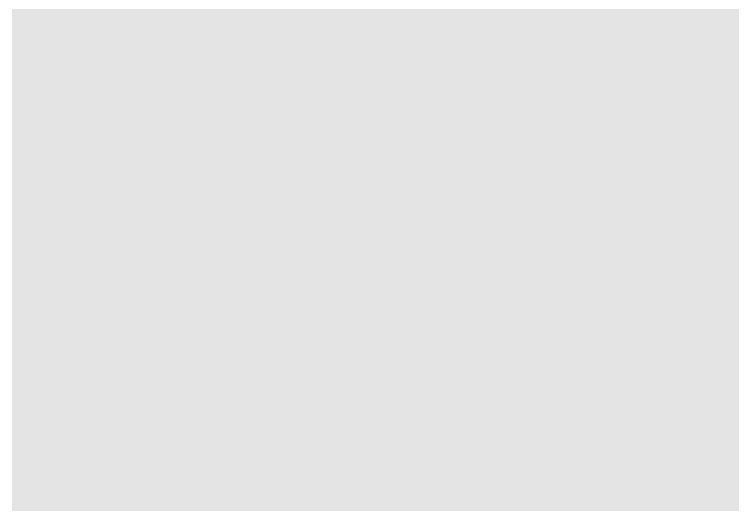
7w24

100%

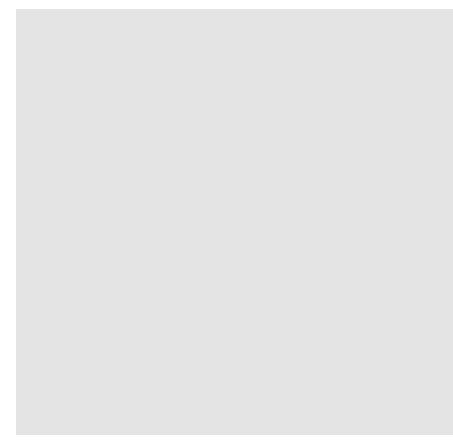
365



2016



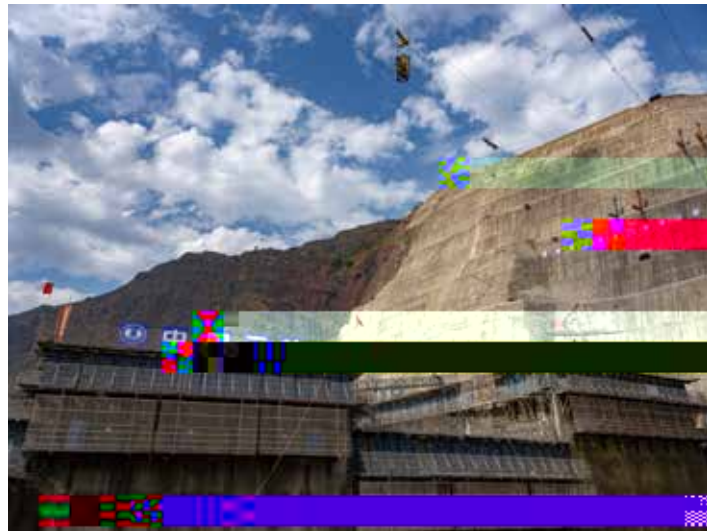
. 2017-2019



04

领导关怀

2017 2019





2019 12 5 6



2018 11 12



2018 5 26



2019 11 30



2019 11 5 6



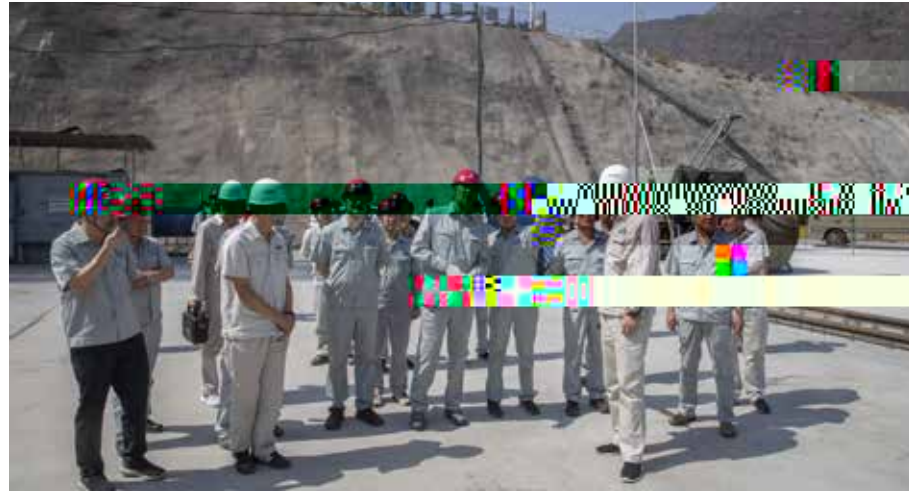
2019 7 4



2019 6 6



2019 7 18 20



2019 5 14



2017 3 15



2019 1 11



2019 8 21



2019 5



2018 10 24



. 2017 - 2019





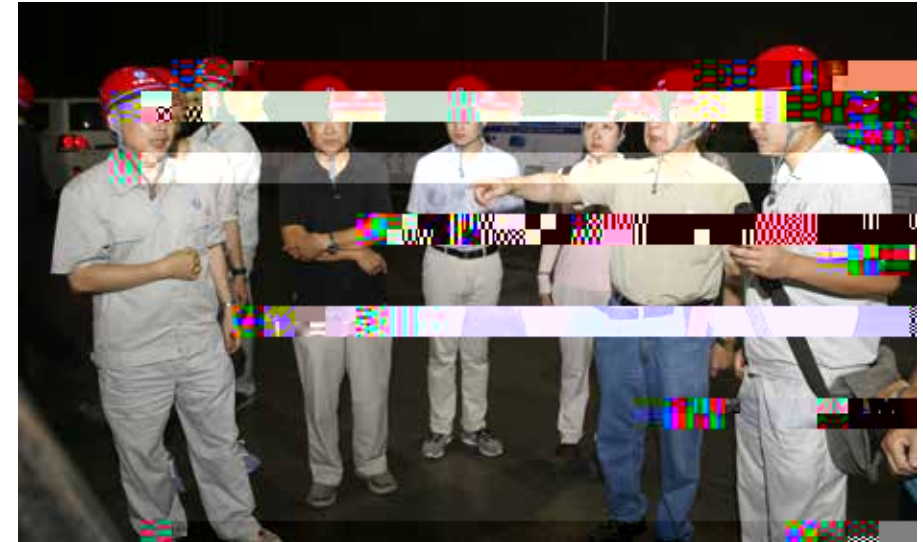
2017 2 6



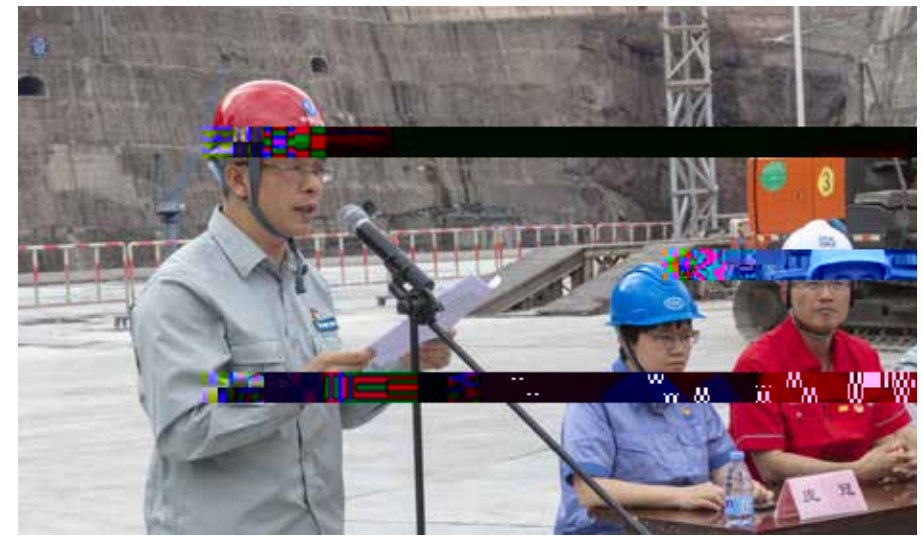
2019 10 22



2017 10 23



2018 8 30



2019 6 12



2019 1 12



. 2017 - 2019





2018 6 23



2018 11 14 15



2017 3 26



. 2017 - 2019

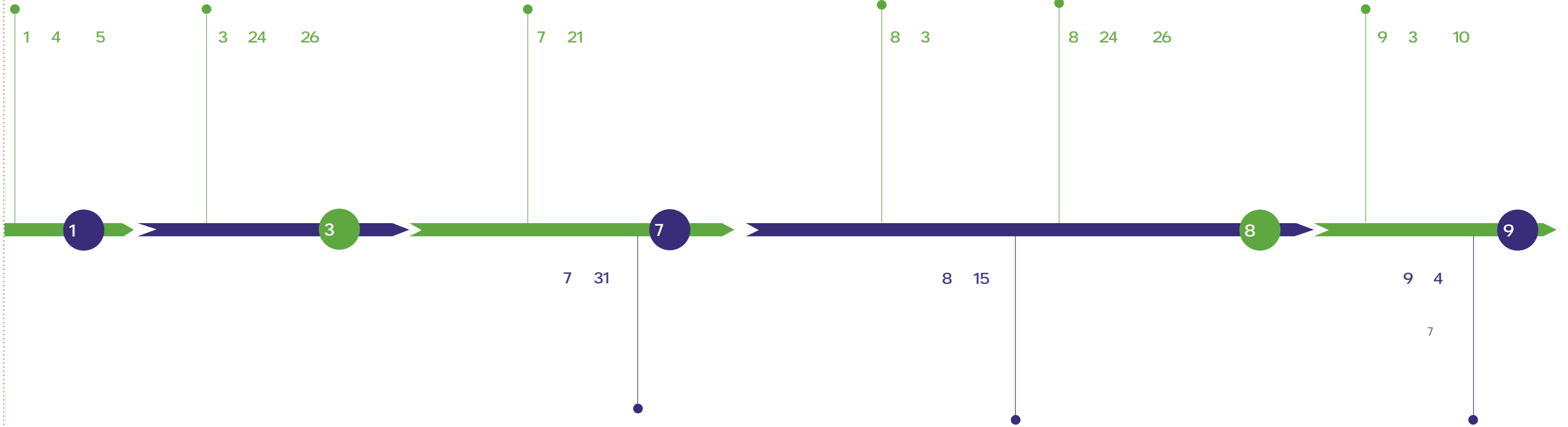


05

工程大事记 (2017-2019)



2017



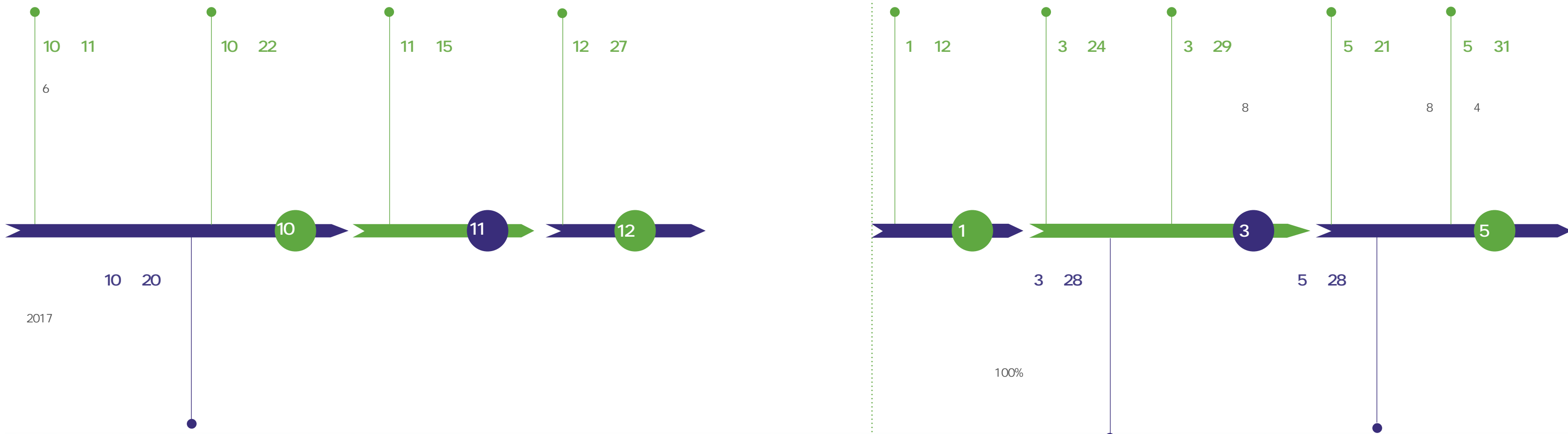
2017-2019



. 2017-2019



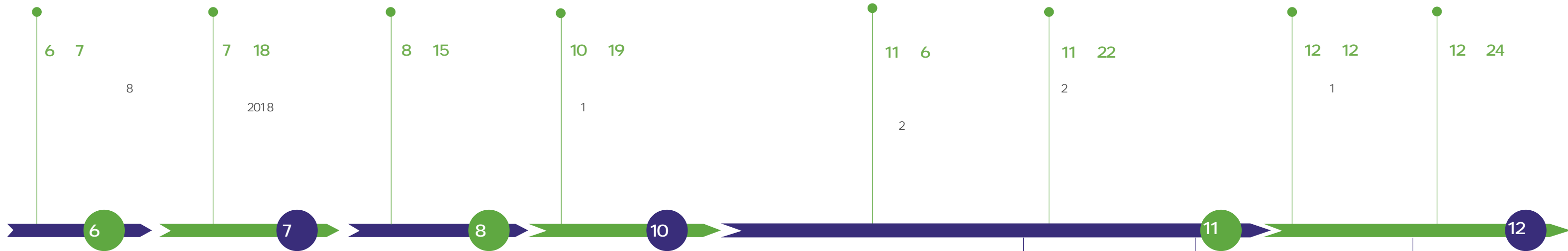
2018



2017

. 2017-2019



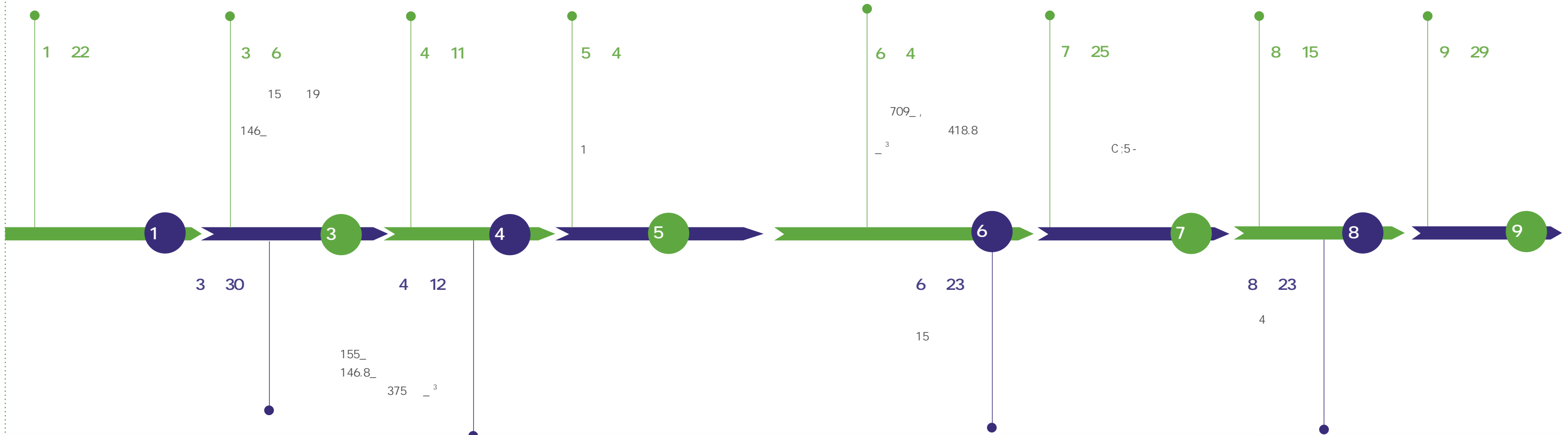


11 16
;Bb_i 3
11 24
1
12 21



2019

2017-2019



. 2017-2019



